



[Go to Product page](#)

Datasheet for ABIN208896

## anti-TRIB3 antibody (AA 315-332)

### 1 Image

#### Overview

Quantity:	0.1 mg
Target:	TRIB3
Binding Specificity:	AA 315-332
Reactivity:	Human
Host:	Rabbit
Clonality:	Polyclonal
Conjugate:	This TRIB3 antibody is un-conjugated
Application:	Western Blotting (WB)

#### Product Details

Immunogen:	Synthetic peptide from human TRIB3. Type of Immunogen: Synthetic peptide
Isotype:	IgG
Specificity:	This detects a protein of approximate mol. wt. of 40 kD in human liver lysate.
Purification:	Protein G purified

#### Target Details

Target:	TRIB3
Alternative Name:	TRB3 / TRIB3 ( <a href="#">TRIB3 Products</a> )

## Target Details

---

Background:	Name/Gene ID: TRIB3 Subfamily: C8FW  Synonyms: TRIB3, C20orf97, NIPK, SINK, TRB-3, TRB3, DJ1103G7.3, SKIP3, Tribbles homolog 3
Gene ID:	57761
UniProt:	<a href="#">Q96RU7</a>
Pathways:	<a href="#">Fc-epsilon Receptor Signaling Pathway</a> , <a href="#">EGFR Signaling Pathway</a> , <a href="#">Neurotrophin Signaling Pathway</a> , <a href="#">Regulation of Lipid Metabolism by PPARalpha</a>

## Application Details

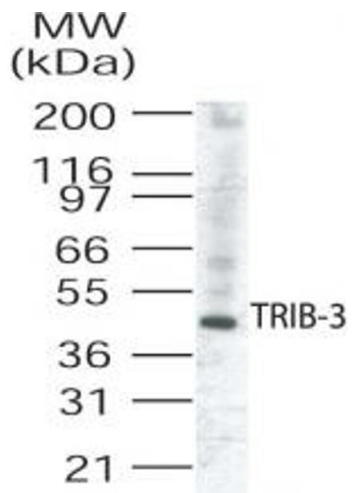
---

Application Notes:	Approved: WB (1 - 3 µg/mL)
Comment:	Target Species of Antibody: Human
Restrictions:	For Research Use only

## Handling

---

Format:	Liquid
Concentration:	Lot specific
Buffer:	PBS, 0.05 % BSA, 0.05 % sodium azide.
Preservative:	Sodium azide
Precaution of Use:	This product contains Sodium azide: a POISONOUS AND HAZARDOUS SUBSTANCE which should be handled by trained staff only.
Handling Advice:	Avoid repeat freeze-thaw cycles.
Storage:	4 °C,-20 °C
Storage Comment:	Short term: 4°C. Long term: Store at -20°C. Avoid freeze-thaw cycles.



### Western Blotting

Image 1.