

Datasheet for ABIN209685

anti-Luteinizing Hormone antibody



[Go to Product page](#)

1 Image

Overview

Quantity:	1 mg
Target:	Luteinizing Hormone (LH)
Reactivity:	Human
Host:	Mouse
Clonality:	Monoclonal
Conjugate:	This Luteinizing Hormone antibody is un-conjugated
Application:	ELISA, Immunohistochemistry (IHC), Immunohistochemistry (Paraffin-embedded Sections) (IHC (p))

Product Details

Immunogen:	Luteinizing Hormone beta (LH).
Isotype:	IgG1
Specificity:	Recognizes human Luteinizing Hormone beta. Typical Cross-reactivity: beta-hCG <1 % ihCG <1 % FSH <1 % TSH <1 %.
Purification:	Ion exchange chromatography

Target Details

Target:	Luteinizing Hormone (LH)
Alternative Name:	LHB / Luteinizing Hormone (LH Products)
Background:	Name/Gene ID: LHB

Target Details

Synonyms: LHB, CGB4, LSH-beta, Luteinizing Hormone, LH-B, Lutropin beta chain, HLHB, LSH-B, Lutropin subunit beta

Gene ID: 3972

UniProt: [P01229](#)

Application Details

Application Notes: Approved: IHC, IHC-P (10 µg/mL), SwELISA

Usage: Suitable for use in ELISA. ELISA: Sandwich. Suitable for use as a capture antibody alongside LS-C25266 as a detection antibody. Dilutions to be determined and optimized by the end-user. Please note that LS-C25266 is not pre-conjugated.

Comment: Target Species of Antibody: Human

Restrictions: For Research Use only

Handling

Format: Liquid

Concentration: Lot specific

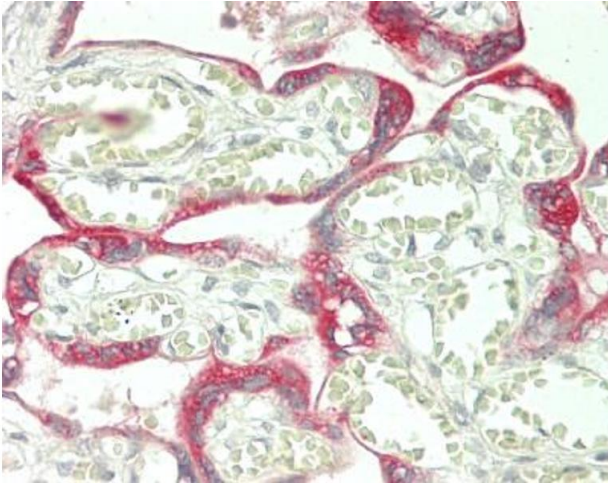
Buffer: PBS, pH 7.4, 0.9 % sodium azide.

Preservative: Sodium azide

Precaution of Use: This product contains Sodium azide: a POISONOUS AND HAZARDOUS SUBSTANCE which should be handled by trained staff only.

Storage: 4 °C, -20 °C

Storage Comment: Short term: 4°C. Long term: Store at -20°C. Avoid freeze-thaw cycles.



Immunohistochemistry (Paraffin-embedded Sections)

Image 1. Human Placenta: Formalin-Fixed, Paraffin-Embedded (FFPE)