

Datasheet for ABIN211585
anti-Integrin beta 4 antibody



[Go to Product page](#)

1 Image

Overview

| | |
|--------------|--|
| Quantity: | 25 µg |
| Target: | Integrin beta 4 (ITGB4) |
| Reactivity: | Human, Ferret, Mustelid |
| Host: | Mouse |
| Clonality: | Monoclonal |
| Conjugate: | This Integrin beta 4 antibody is un-conjugated |
| Application: | Western Blotting (WB), Immunohistochemistry (IHC), Flow Cytometry (FACS), Immunoprecipitation (IP), Immunohistochemistry (Frozen Sections) (IHC (fro)) |

Product Details

| | |
|---------------|--|
| Immunogen: | Purified alpha6 beta4 integrin from A431 cells. Type of Immunogen: Cells |
| Clone: | 450-9D |
| Isotype: | IgG1 |
| Specificity: | Recognizes the human beta4 integrin, also known as CD104. CD104 is a ~205 kD glycoprotein which associates with the alpha6 integrin to form the alpha6/beta4 complex. CD104 is expressed on epithelial cells, Schwann cells and various tumor cell lines. Recognizes an extracellular epitope on the CD104 Molecule. |
| Purification: | Protein G purified |

Target Details

| | |
|-------------------|--|
| Target: | Integrin beta 4 (ITGB4) |
| Alternative Name: | ITGB4 / Integrin Beta 4 (ITGB4 Products) |
| Background: | Name/Gene ID: ITGB4 Family: Integrin Synonyms: ITGB4, CD104, Integrin beta-4, Integrin Beta 4, gp150, CD104 antigen, Integrin beta-4 subunit, Integrin, beta 4 |
| Gene ID: | 3691 |
| UniProt: | P16144 |
| Pathways: | Integrin Complex |

Application Details

| | |
|--------------------|--|
| Application Notes: | Approved: Flo (1:25 - 1:100), IHC, IHC-Fr (1:500 - 1:1000), IP, WB Usage: Flow Cytometry: Use 10 µL of the suggested working dilution to label 10 ⁶ cells in 100 µL. |
| Comment: | Target Species of Antibody: Human |
| Restrictions: | For Research Use only |

Handling

| | |
|--------------------|--|
| Format: | Liquid |
| Concentration: | Lot specific |
| Buffer: | PBS, pH 7.4, 0.09 % sodium azide. |
| Preservative: | Sodium azide |
| Precaution of Use: | This product contains Sodium azide: a POISONOUS AND HAZARDOUS SUBSTANCE which should be handled by trained staff only. |
| Handling Advice: | Avoid repeated freezing and thawing. |
| Storage: | 4 °C, -20 °C |
| Storage Comment: | 4°C or -20°C, Avoid freeze-thaw cycles. |

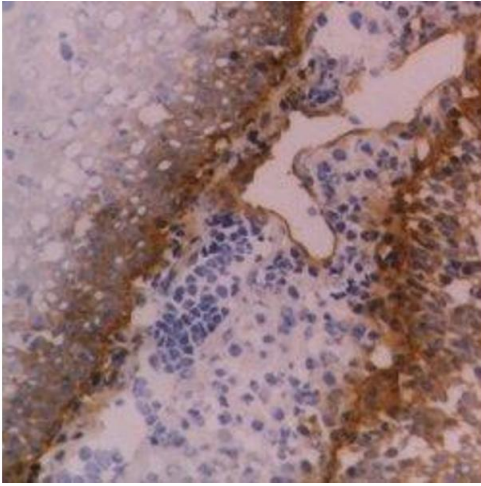


Image 1.