



[Go to Product page](#)

Datasheet for ABIN2117684
anti-Keratin 2 antibody (AA 200-508)

3 Images

Overview

Quantity:	100 µL
Target:	Keratin 2 (KRT2)
Binding Specificity:	AA 200-508
Reactivity:	Mouse
Host:	Rabbit
Clonality:	Polyclonal
Conjugate:	This Keratin 2 antibody is un-conjugated
Application:	Western Blotting (WB), Immunohistochemistry (IHC), Immunocytochemistry (ICC)

Product Details

Immunogen:	KRT2 (Arg200-Glu508)
Isotype:	IgG
Specificity:	The antibody is a rabbit polyclonal antibody raised against KRT2. It has been selected for its ability to recognize KRT2 in immunohistochemical staining and western blotting.
Characteristics:	The antibody is a rabbit polyclonal antibody raised against KRT2. It has been selected for its ability to recognize KRT2 in immunohistochemical staining and western blotting.
Purification:	Antigen-specific affinity chromatography

Target Details

Target:	Keratin 2 (KRT2)
---------	------------------

Target Details

Abstract: [KRT2 Products](#)

Background: Alternative Names: KRT2A, CK2, KRTE, Cytokeratin 2, Keratin 2A, Keratin 2E, Epidermal Ichthyosis Bullosa Of Siemens, Keratin, type II cytoskeletal 2 epidermal, Epithelial keratin-2e

Application Details

Application Notes:

- Western blotting: 1:50-400 Immunocytochemistry in formalin fixed cells: 1:50-500 Immunohistochemistry in formalin fixed frozen section: 1:50-500 Immunohistochemistry in paraffin section: 1:10-100 Enzyme-linked Immunosorbent Assay: 1:100-1:5000 Optimal working dilutions must be determined by end user.

Comment: The thermal stability is described by the loss rate. The loss rate was determined by accelerated thermal degradation test, that is, incubate the protein at 37°C for 48h, and no obvious degradation and precipitation were observed. The loss rate is less than 5% within the expiration date under appropriate storage condition.

Restrictions: For Research Use only

Handling

Format: Liquid

Concentration: Lot specific

Buffer: PBS, pH 7.4, containing 0.02 % Sodium azide, 50 % glycerol.

Preservative: Sodium azide

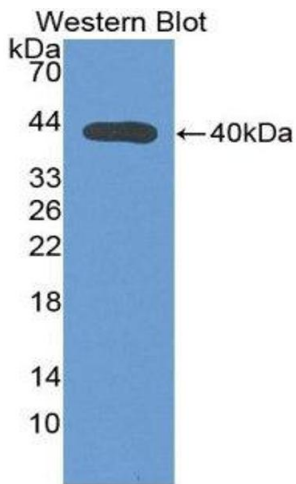
Precaution of Use: This product contains Sodium azide: a POISONOUS AND HAZARDOUS SUBSTANCE which should be handled by trained staff only.

Handling Advice: Avoid repeated freeze-thaw cycles.

Storage: 4 °C/-20 °C/-80 °C

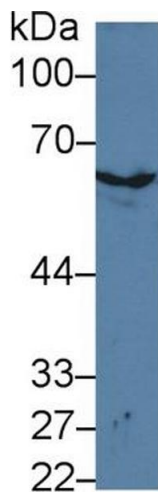
Storage Comment: Store at 4 °C for frequent use. Stored at -20 °C to -80 °C in a manual defrost freezer for one year without detectable loss of activity.

Expiry Date: 12 months



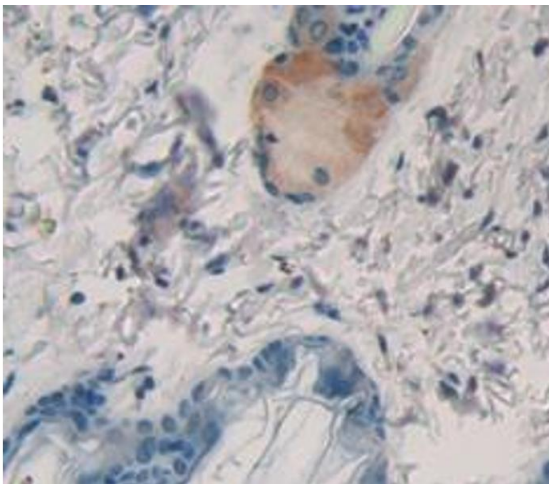
Western Blotting

Image 1.



Western Blotting

Image 2. Western Blot; Sample: Mouse Skin lysate; Primary Ab: 3µg/ml Rabbit Anti-Mouse KRT2 Antibody Second Ab: 0.2µg/mL HRP-Linked Caprine Anti-Rabbit IgG Polyclonal Antibody (Catalog: SAA544Rb19)



Immunohistochemistry

Image 3. Used in DAB staining on formalin fixed paraffin-embedded Kidney tissue