

Datasheet for ABIN2118554  
**anti-IGLL1 antibody (AA 29-201)**[Go to Product page](#)

## 4 Images

## Overview

Quantity:	100 µL
Target:	IGLL1
Binding Specificity:	AA 29-201
Reactivity:	Human
Host:	Rabbit
Clonality:	Polyclonal
Application:	Western Blotting (WB), Immunohistochemistry (IHC), Immunocytochemistry (ICC)

## Product Details

Immunogen:	IgLL1 (Leu29-Ser201)
Isotype:	IgG
Specificity:	The antibody is a rabbit polyclonal antibody raised against IgLL1. It has been selected for its ability to recognize IgLL1 in immunohistochemical staining and western blotting.
Characteristics:	The antibody is a rabbit polyclonal antibody raised against IgLL1. It has been selected for its ability to recognize IgLL1 in immunohistochemical staining and western blotting.
Purification:	Antigen-specific affinity chromatography

## Target Details

Target:	IGLL1
Alternative Name:	Immunoglobulin lambda Like Polypeptide 1 (IgLL1) ( <a href="#">IGLL1 Products</a> )

## Target Details

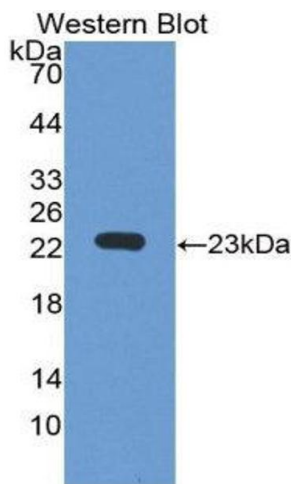
Background:	Alternative Names: CD179b, IGL1, IGL5, IGLL, IGO, IGVPB, VPREB2, CD179 antigen-like family member B, Ig lambda-5, Immunoglobulin omega polypeptide, Immunoglobulin-related protein 14.1
Pathways:	<a href="#">Regulation of Cell Size</a>

## Application Details

Application Notes:	<ul style="list-style-type: none"><li>Western blotting: 1:50-400 Immunocytochemistry in formalin fixed cells: 1:50-500 Immunohistochemistry in formalin fixed frozen section: 1:50-500 Immunohistochemistry in paraffin section: 1:10-100 Enzyme-linked Immunosorbent Assay: 1:100-1:5000 Optimal working dilutions must be determined by end user.</li></ul>
Comment:	The thermal stability is described by the loss rate. The loss rate was determined by accelerated thermal degradation test, that is, incubate the protein at 37&degC for 48h, and no obvious degradation and precipitation were observed. The loss rate is less than 5% within the expiration date under appropriate storage condition.
Restrictions:	For Research Use only

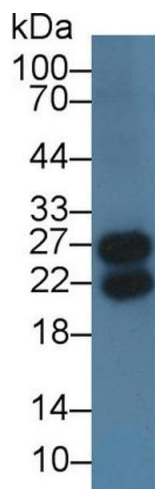
## Handling

Format:	Liquid
Concentration:	Lot specific
Buffer:	PBS, pH 7.4, containing 0.02 % Sodium azide, 50 % glycerol.
Preservative:	Sodium azide
Precaution of Use:	This product contains Sodium azide: a POISONOUS AND HAZARDOUS SUBSTANCE which should be handled by trained staff only.
Handling Advice:	Avoid repeated freeze-thaw cycles.
Storage:	4 °C/-20 °C/-80 °C
Storage Comment:	Store at 4 °C for frequent use. Stored at -20 °C to -80 °C in a manual defrost freezer for one year without detectable loss of activity.
Expiry Date:	12 months



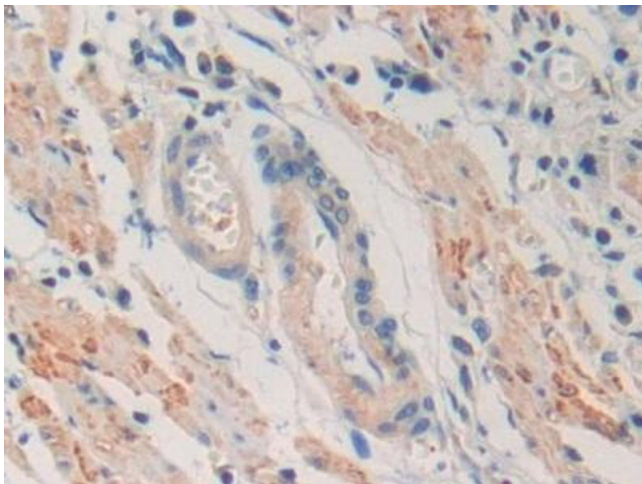
#### Western Blotting

**Image 1.**



#### Western Blotting

**Image 2.** Western Blot; Sample: Mouse Spleen lysate; Primary Ab: 3µg/ml Rabbit Anti-Human IgL1 Antibody Second Ab: 0.2µg/mL HRP-Linked Caprine Anti-Rabbit IgG Polyclonal Antibody (Catalog: SAA544Rb19)



#### Immunohistochemistry

**Image 3.** DAB staining on IHC-P; Samples: Human Stomach cancer Tissue

Please check the [product details page](#) for more images. Overall 4 images are available for ABIN2118554.