

Datasheet for ABIN2118759
anti-PCOLCE antibody (AA 315-437)



[Go to Product page](#)

1 Image

Overview

Quantity:	100 µL
Target:	PCOLCE
Binding Specificity:	AA 315-437
Reactivity:	Human
Host:	Mouse
Clonality:	Monoclonal
Conjugate:	This PCOLCE antibody is un-conjugated
Application:	Western Blotting (WB), ELISA, Immunocytochemistry (ICC), Immunohistochemistry (Paraffin-embedded Sections) (IHC (p)), Immunohistochemistry (Frozen Sections) (IHC (fro))

Product Details

Immunogen:	PCPE1 (AA 315-437)
Sequence:	MHHHHHHSSG LVPRGSGMKE TAAAKFERQH MDSPDLGTDD DDKAMADIGS EF- APTCPK QCRRTGTLQS NFCASSLVVT ATVKSMVREP GEGLAVTVSL IGAYKTGGLD LPSPPTGASL KFYVPCKQCP PMKKGVSYLL MGQVEENRGP VLPPESFVVL HRPNQDQILT NLSKRKC
Isotype:	IgG
Specificity:	It has been selected for its ability to recognize PCPE1 in immunohistochemical staining and Western blotting.
Purification:	Affinity Chromatography

Target Details

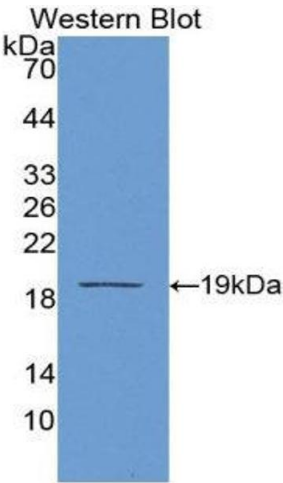
Target:	PCOLCE
Alternative Name:	Procollagen C Proteinase Enhancer 1 (PCPE1) (PCOLCE Products)

Application Details

Application Notes:	Western blotting: 1:100-400 Immunocytochemistry in formalin fixed cells: 1:100-500 Immunohistochemistry in formalin fixed frozen section: 1:100-500 Immunohistochemistry in paraffin section: 1:50-200 Enzyme-linked Immunosorbent Assay: 1:100-200 Optimal working dilutions must be determined by end user.
Restrictions:	For Research Use only

Handling

Format:	Liquid
Concentration:	Lot specific
Buffer:	Supplied as solution form in PBS, pH7.4, containing 0.02 % NaN ₃ , 50 % glycerol.
Preservative:	Sodium azide
Precaution of Use:	WARNING: Reagents contain sodium azide. Sodium azide is very toxic if ingested or inhaled. Avoid contact with skin, eyes, or clothing. Wear eye or face protection when handling. If skin or eye contact occurs, wash with copious amounts of water. If ingested or inhaled, contact a physician immediately. Sodium azide yields toxic hydrazoic acid under acidic conditions. Dilute azide-containing compounds in running water before discarding to avoid accumulation of potentially explosive deposits in lead or copper plumbing.
Handling Advice:	Avoid repeated freeze/thaw cycles
Storage:	4 °C
Storage Comment:	Store at 2-8 °C for one month. Aliquot and store at -80 °C for 12 months.
Expiry Date:	12 months



Western Blotting

Image 1.