

Datasheet for ABIN2119291  
**anti-ADAP1 antibody (AA 45-356)**

## 3 Images

[Go to Product page](#)

## Overview

Quantity:	100 µL
Target:	ADAP1
Binding Specificity:	AA 45-356
Reactivity:	Human
Host:	Rabbit
Clonality:	Polyclonal
Application:	Western Blotting (WB), Immunohistochemistry (IHC), Immunocytochemistry (ICC)

## Product Details

Immunogen:	CENTa1 (Ser45-Asp356)
Isotype:	IgG
Specificity:	The antibody is a rabbit polyclonal antibody raised against CENTa1. It has been selected for its ability to recognize CENTa1 in immunohistochemical staining and western blotting.
Characteristics:	The antibody is a rabbit polyclonal antibody raised against CENTa1. It has been selected for its ability to recognize CENTa1 in immunohistochemical staining and western blotting.
Purification:	Antigen-specific affinity chromatography

## Target Details

Target:	ADAP1
Alternative Name:	Centaurin alpha 1 (CENTa1) ( <a href="#">ADAP1 Products</a> )

## Target Details

Background:	Alternative Names: CENT-A1, ADAP1, GCS1L, P42IP4, Arf-GAP with dual PH domain-containing protein 1, Putative MAPK-activating protein PM25
-------------	---

## Application Details

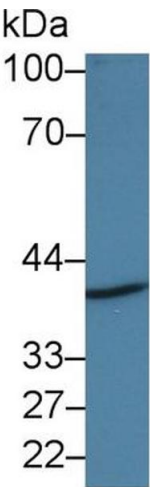
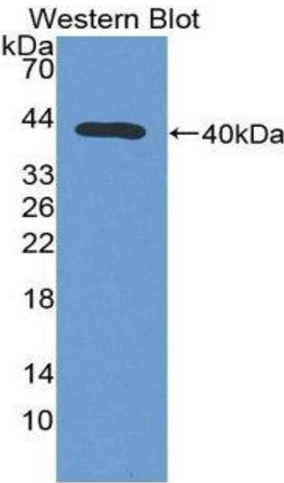
Application Notes:	<ul style="list-style-type: none"><li>Western blotting: 1:50-400 Immunocytochemistry in formalin fixed cells: 1:50-500 Immunohistochemistry in formalin fixed frozen section: 1:50-500 Immunohistochemistry in paraffin section: 1:10-100 Enzyme-linked Immunosorbent Assay: 1:100-1:5000 Optimal working dilutions must be determined by end user.</li></ul>
--------------------	---

Comment:	The thermal stability is described by the loss rate. The loss rate was determined by accelerated thermal degradation test, that is, incubate the protein at 37&degC for 48h, and no obvious degradation and precipitation were observed. The loss rate is less than 5% within the expiration date under appropriate storage condition.
----------	--

Restrictions:	For Research Use only
---------------	-----------------------

## Handling

Format:	Liquid
Concentration:	Lot specific
Buffer:	PBS, pH 7.4, containing 0.02 % Sodium azide, 50 % glycerol.
Preservative:	Sodium azide
Precaution of Use:	This product contains Sodium azide: a POISONOUS AND HAZARDOUS SUBSTANCE which should be handled by trained staff only.
Handling Advice:	Avoid repeated freeze-thaw cycles.
Storage:	4 °C/-20 °C/-80 °C
Storage Comment:	Store at 4 °C for frequent use. Stored at -20 °C to -80 °C in a manual defrost freezer for one year without detectable loss of activity.
Expiry Date:	12 months

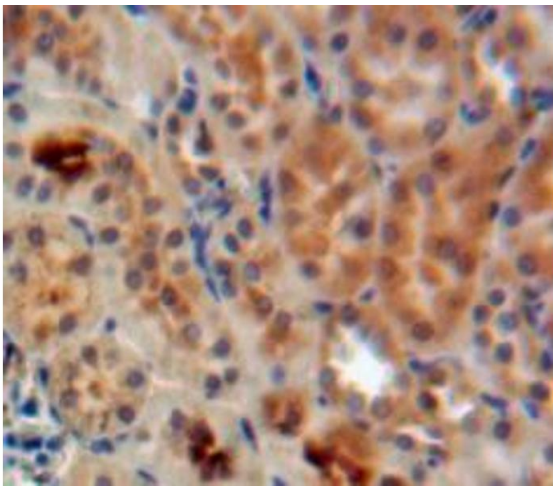


#### Western Blotting

**Image 1.**

#### Western Blotting

**Image 2.** Western Blot; Sample: Mouse Cerebrum lysate;  
Primary Ab: 3µg/ml Rabbit Anti-Human CENTa1 Antibody  
Second Ab: 0.2µg/mL HRP-Linked Caprine Anti-Rabbit IgG  
Polyclonal Antibody (Catalog: SAA544Rb19)



#### Immunohistochemistry

**Image 3.** Used in DAB staining on fromalin fixed paraffin-embedded Kidney tissue