

Datasheet for ABIN212236
anti-Netrin 1 antibody



[Go to Product page](#)

1 Image

Overview

Quantity:	25 µg
Target:	Netrin 1 (NTN1)
Reactivity:	Human, Mouse, Rat, Cow, Cat, Macaque
Host:	Rabbit
Clonality:	Polyclonal
Conjugate:	This Netrin 1 antibody is un-conjugated
Application:	Western Blotting (WB)

Product Details

Immunogen:	Synthetic peptide derived from the human Netrin 1 protein.
	Type of Immunogen: Synthetic peptide
Purification:	Immunoaffinity purified

Target Details

Target:	Netrin 1 (NTN1)
Alternative Name:	NTN1 / Netrin 1 (NTN1 Products)
Background:	Name/Gene ID: NTN1
	Synonyms: NTN1, Netrin 1, Netrin 1, mouse, homolog of, Netrin-1, NTN1L
Gene ID:	9423

Target Details

Pathways: [Regulation of Cell Size](#)

Application Details

Application Notes: Optimal working dilution should be determined by the investigator.

Comment: Target Species of Antibody: Human

Restrictions: For Research Use only

Handling

Format: Liquid

Concentration: Lot specific

Buffer: PBS, 0.08 % sodium azide.

Preservative: Sodium azide

Precaution of Use: This product contains Sodium azide: a POISONOUS AND HAZARDOUS SUBSTANCE which should be handled by trained staff only.

Storage: 4 °C,-20 °C

Storage Comment: 4°C or -20°C, Avoid freeze-thaw cycles.

Images

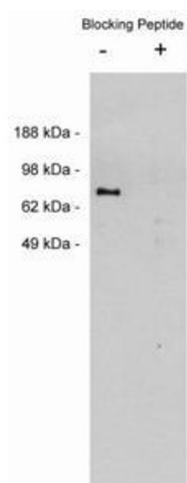


Image 1.