

Datasheet for ABIN2128108

BCL2L10 Protein[Go to Product page](#)**1** Image

Overview

Quantity:	100 µg
Target:	BCL2L10
Origin:	Human
Source:	Escherichia coli (E. coli)
Protein Type:	Recombinant
Application:	SDS-PAGE (SDS)

Product Details

Purity:	> 90 % pure
---------	-------------

Target Details

Target:	BCL2L10
Alternative Name:	BCL2L10 (BCL2L10 Products)
Molecular Weight:	21.8 kDa
Pathways:	Positive Regulation of Endopeptidase Activity

Application Details

Restrictions:	For Research Use only
---------------	-----------------------

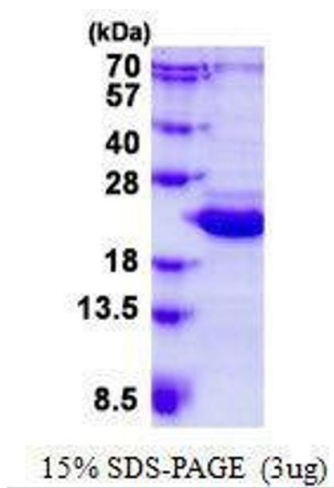
Handling

Format:	Liquid
---------	--------

Handling

Concentration:	500 µg/mL
Buffer:	Supplied in liquid form in 20 mM Tris-HCl buffer (pH 8.0) containing 0.15M NaCl,20 % glycerol, 1 mM DTT
Preservative:	Dithiothreitol (DTT)
Precaution of Use:	This product contains Dithiothreitol (DTT): a POISONOUS AND HAZARDOUS SUBSTANCE which should be handled by trained staff only.
Storage:	4 °C/-20 °C/-80 °C

Images



SDS-PAGE

Image 1. Figure annotation denotes ug of protein loaded and % gel used.