

Datasheet for ABIN2128198

BOLA1 Protein[Go to Product page](#)**1** Image

Overview

Quantity:	100 µg
Target:	BOLA1
Origin:	Human
Source:	Escherichia coli (E. coli)
Protein Type:	Recombinant
Application:	SDS-PAGE (SDS)

Product Details

Purity:	> 95 % pure
---------	-------------

Target Details

Target:	BOLA1
Alternative Name:	BOLA1 (BOLA1 Products)
Molecular Weight:	14 kDa

Application Details

Restrictions:	For Research Use only
---------------	-----------------------

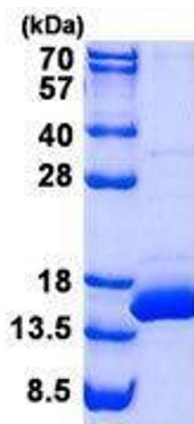
Handling

Format:	Liquid
Concentration:	1 mg/mL

Handling

Buffer:	Supplied in liquid form in 20 mM Tris-HCl buffer (pH 8.0) containing 0.2M NaCl, 20 % glycerol, 1 mM DTT
Preservative:	Dithiothreitol (DTT)
Precaution of Use:	This product contains Dithiothreitol (DTT): a POISONOUS AND HAZARDOUS SUBSTANCE which should be handled by trained staff only.
Storage:	4 °C/-20 °C/-80 °C

Images



15% SDS-PAGE (3ug)

SDS-PAGE

Image 1. Figure annotation denotes ug of protein loaded and % gel used.