

Datasheet for ABIN2128418 **CD226 Protein (CD226)**



[Go to Product page](#)

1 Image

Overview

Quantity:	100 µg
Target:	CD226
Origin:	Human
Source:	Escherichia coli (E. coli)
Protein Type:	Recombinant
Application:	SDS-PAGE (SDS)

Product Details

Purification: CD226 protein was purified using Protein G affinity chromatography

Target Details

Target:	CD226
Alternative Name:	CD226 (CD226 Products)
Pathways:	Regulation of Leukocyte Mediated Immunity , Positive Regulation of Immune Effector Process , Cancer Immune Checkpoints

Application Details

Restrictions: For Research Use only

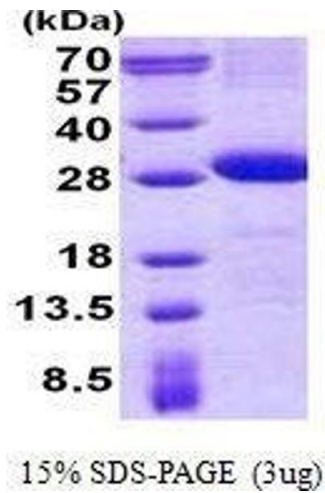
Handling

Format: Liquid

Handling

Concentration:	1 mg/mL
Buffer:	Supplied in liquid form in 20 mM Tris-HCl buffer (pH 8.0) containing 0.4M UREA, 10 % glycerol
Storage:	4 °C/-20 °C/-80 °C

Images



SDS-PAGE

Image 1. Figure annotation denotes ug of protein loaded and % gel used.