

Datasheet for ABIN2128427
CD300c Protein (CD300C)



[Go to Product page](#)

1 Image

Overview

Quantity:	100 µg
Target:	CD300c (CD300C)
Origin:	Human
Source:	Escherichia coli (E. coli)
Protein Type:	Recombinant
Application:	SDS-PAGE (SDS)

Product Details

Purification: CD300C protein was purified using Protein G affinity chromatography

Target Details

Target:	CD300c (CD300C)
Alternative Name:	CD300C (CD300C Products)

Application Details

Restrictions: For Research Use only

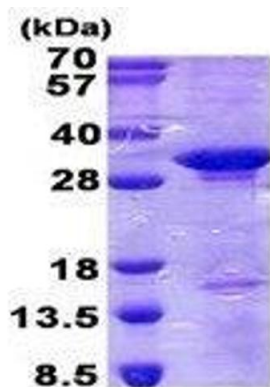
Handling

Format:	Liquid
Concentration:	1 mg/mL
Buffer:	Supplied in liquid form in 20 mM Tris-HCl buffer (pH 8.0) containing 0.4M urea, 10 % glycerol

Handling

Storage: 4 °C/-20 °C/-80 °C

Images



15% SDS-PAGE (3ug)

SDS-PAGE

Image 1. Figure annotation denotes ug of protein loaded and % gel used.