

Datasheet for ABIN2128432  
**CD3 epsilon Protein (CD3E)**



[Go to Product page](#)

1 Image

## Overview

Quantity:	50 µg
Target:	CD3 epsilon (CD3E)
Origin:	Human
Source:	Escherichia coli (E. coli)
Protein Type:	Recombinant
Application:	SDS-PAGE (SDS)

## Product Details

Purity:	> 90 % pure
---------	-------------

## Target Details

Target:	CD3 epsilon (CD3E)
Alternative Name:	CD3E ( <a href="#">CD3E Products</a> )
Molecular Weight:	14.1 kDa
Pathways:	<a href="#">TCR Signaling</a> , <a href="#">CXCR4-mediated Signaling Events</a> , <a href="#">Ubiquitin Proteasome Pathway</a>

## Application Details

Restrictions:	For Research Use only
---------------	-----------------------

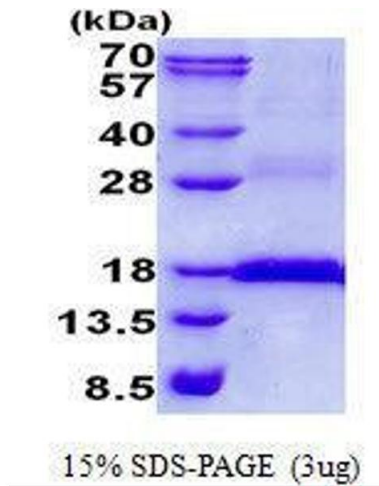
## Handling

Format:	Liquid
---------	--------

## Handling

Concentration:	1 mg/mL
Buffer:	Supplied in liquid form in 20 mM Tris-HCl buffer ( pH 8.0) containing 0.2M NaCl, 10 % glycerol
Storage:	4 °C/-20 °C/-80 °C

## Images



### SDS-PAGE

**Image 1.** Figure annotation denotes ug of protein loaded and % gel used.