

Datasheet for ABIN2128523

CHI3L1 Protein[Go to Product page](#)**1** Image

Overview

Quantity:	10 µg
Target:	CHI3L1
Origin:	Human
Source:	CHO Cells
Protein Type:	Recombinant
Application:	SDS-PAGE (SDS)

Product Details

Purification:	CHI3L1 protein was purified using Protein G affinity chromatography
---------------	---

Target Details

Target:	CHI3L1
Alternative Name:	CHI3L1 (CHI3L1 Products)
Target Type:	Viral Protein

Application Details

Restrictions:	For Research Use only
---------------	-----------------------

Handling

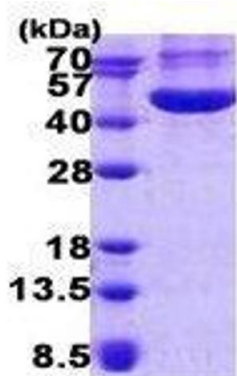
Format:	Liquid
Concentration:	250 µg/mL

Handling

Buffer: Supplied in liquid form in Phosphate-Buffered Saline (pH 7.4)

Storage: 4 °C/-20 °C/-80 °C

Images



15% SDS-PAGE (3ug)

SDS-PAGE

Image 1. Figure annotation denotes ug of protein loaded and % gel used.