

Datasheet for ABIN2128533

**CHMP1A Protein**[Go to Product page](#)**1** Image

## Overview

Quantity:	20 µg
Target:	CHMP1A
Origin:	Human
Source:	Escherichia coli (E. coli)
Protein Type:	Recombinant
Application:	SDS-PAGE (SDS)

## Product Details

Purity:	> 85 % pure
---------	-------------

## Target Details

Target:	CHMP1A
Alternative Name:	CHMP1A ( <a href="#">CHMP1A Products</a> )
Molecular Weight:	24.1 kDa

## Application Details

Restrictions:	For Research Use only
---------------	-----------------------

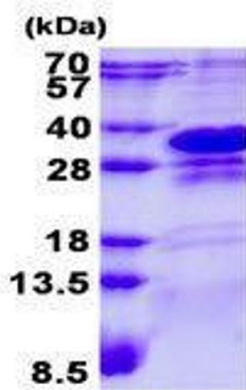
## Handling

Format:	Liquid
Concentration:	500 µg/mL

## Handling

Buffer:	Supplied in liquid form in 20 mM Tris-HCl buffer ( pH 8.0) containing 0.1M NaCl, 20 % glycerol,1 mM DTT
Preservative:	Dithiothreitol (DTT)
Precaution of Use:	This product contains Dithiothreitol (DTT): a POISONOUS AND HAZARDOUS SUBSTANCE which should be handled by trained staff only.
Storage:	4 °C/-20 °C/-80 °C

## Images



15% SDS-PAGE (3ug)

### SDS-PAGE

**Image 1.** Figure annotation denotes ug of protein loaded and % gel used.