

Datasheet for ABIN2128586

CLEC2D Protein[Go to Product page](#)**1** Image

Overview

Quantity:	100 µg
Target:	CLEC2D
Origin:	Human
Source:	Escherichia coli (E. coli)
Protein Type:	Recombinant
Application:	SDS-PAGE (SDS)

Product Details

Purification: CLEC2D protein was purified using Protein G affinity chromatography

Target Details

Target:	CLEC2D
Alternative Name:	CLEC2D (CLEC2D Products)
Pathways:	Regulation of Leukocyte Mediated Immunity

Application Details

Restrictions: For Research Use only

Handling

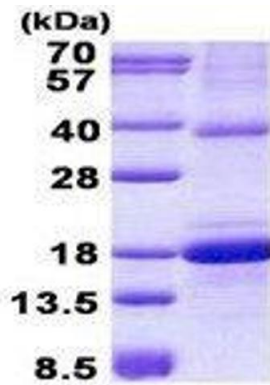
Format:	Liquid
Concentration:	1 mg/mL

Handling

Buffer: Supplied in liquid form in 20 mM Tris-HCl buffer (pH 8.0) containing 0.4M urea, 10 % glycerol

Storage: 4 °C/-20 °C/-80 °C

Images



15% SDS-PAGE (3ug)

SDS-PAGE

Image 1. Figure annotation denotes ug of protein loaded and % gel used.