

Datasheet for ABIN2128676

CPE Protein[Go to Product page](#)**1** Image

Overview

Quantity:	100 µg
Target:	CPE
Origin:	Human
Source:	Escherichia coli (E. coli)
Protein Type:	Recombinant
Application:	SDS-PAGE (SDS)

Product Details

Purification: CPE protein was purified using Protein G affinity chromatography

Target Details

Target:	CPE
Alternative Name:	CPE (CPE Products)
Pathways:	Peptide Hormone Metabolism , Synaptic Membrane

Application Details

Restrictions: For Research Use only

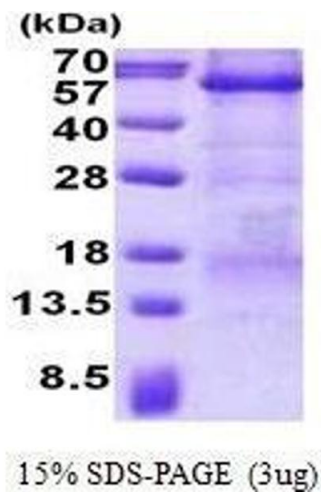
Handling

Format:	Liquid
Concentration:	500 µg/mL

Handling

Buffer:	Supplied in liquid form in 20 mM Tris-HCl buffer (pH 8.0) containing 0.15M NaCl, 10 % glycerol, 1 mM DTT
Preservative:	Dithiothreitol (DTT)
Precaution of Use:	This product contains Dithiothreitol (DTT): a POISONOUS AND HAZARDOUS SUBSTANCE which should be handled by trained staff only.
Storage:	4 °C/-20 °C/-80 °C

Images



SDS-PAGE

Image 1. Figure annotation denotes ug of protein loaded and % gel used.