

Datasheet for ABIN2128861

DEDD Protein[Go to Product page](#)**1** Image

Overview

Quantity:	50 µg
Target:	DEDD
Origin:	Human
Source:	Escherichia coli (E. coli)
Protein Type:	Recombinant
Application:	SDS-PAGE (SDS)

Product Details

Purification: DEDD protein was purified using Protein G affinity chromatography

Target Details

Target:	DEDD
Alternative Name:	DEDD (DEDD Products)

Application Details

Restrictions: For Research Use only

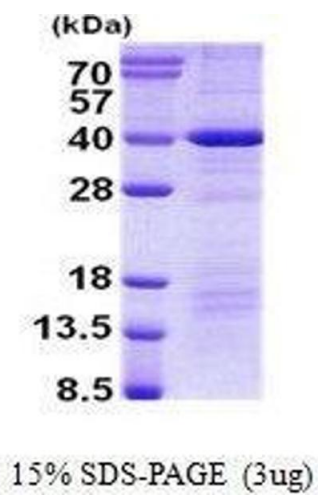
Handling

Format:	Liquid
Concentration:	500 µg/mL
Buffer:	Supplied in liquid form in 20 mM Tris-HCl buffer (pH 8.0) containing 0.4M Urea, 10 % glycerol

Handling

Storage: 4 °C/-20 °C/-80 °C

Images



SDS-PAGE

Image 1. Figure annotation denotes ug of protein loaded and % gel used.