

Datasheet for ABIN2128948

DNAL1 Protein[Go to Product page](#)**1** Image

Overview

Quantity:	100 µg
Target:	DNAL1
Origin:	Human
Source:	Escherichia coli (E. coli)
Protein Type:	Recombinant
Application:	SDS-PAGE (SDS)

Product Details

Purification:	DNAL1 protein was purified using Protein G affinity chromatography
---------------	--

Target Details

Target:	DNAL1
Alternative Name:	DNAL1 (DNAL1 Products)

Application Details

Restrictions:	For Research Use only
---------------	-----------------------

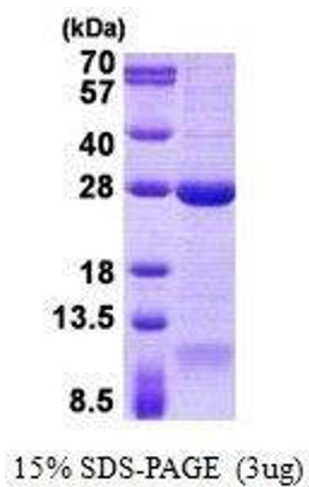
Handling

Format:	Liquid
Concentration:	1 mg/mL
Buffer:	Supplied in liquid form in 20 mM Tris-HCl buffer (pH 8.0) containing 0.4M Urea, 10 % glycerol

Handling

Storage: 4 °C/-20 °C/-80 °C

Images



SDS-PAGE

Image 1. Figure annotation denotes ug of protein loaded and % gel used.