

Datasheet for ABIN2129101

**EpCAM Protein**[Go to Product page](#)**1** Image

## Overview

Quantity:	100 µg
Target:	EpCAM (EPCAM)
Origin:	Human
Source:	Escherichia coli (E. coli)
Protein Type:	Recombinant
Application:	SDS-PAGE (SDS)

## Product Details

Purity:	> 85 % pure
---------	-------------

## Target Details

Target:	EpCAM (EPCAM)
Alternative Name:	EPCAM ( <a href="#">EPCAM Products</a> )
Molecular Weight:	30.1 kDa

## Application Details

Restrictions:	For Research Use only
---------------	-----------------------

## Handling

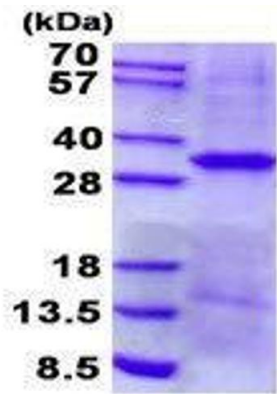
Format:	Liquid
Concentration:	1 mg/mL

## Handling

Buffer: Supplied in liquid form in 20 mM Tris-HCl buffer ( pH 8.0) containing 0.4M urea, 10 % glycerol

Storage: 4 °C/-20 °C/-80 °C

## Images



15% SDS-PAGE (3ug)

### SDS-PAGE

**Image 1.** Figure annotation denotes ug of protein loaded and % gel used.