

Datasheet for ABIN2129185

FASL Protein[Go to Product page](#)**1** Image

Overview

Quantity:	100 µg
Target:	FASL
Origin:	Human
Source:	Escherichia coli (E. coli)
Protein Type:	Recombinant
Application:	SDS-PAGE (SDS)

Product Details

Purity:	> 90 % pure
---------	-------------

Target Details

Target:	FASL
Alternative Name:	FASLG (FASL Products)
Molecular Weight:	19.6 kDa
Pathways:	Apoptosis , EGFR Signaling Pathway , Production of Molecular Mediator of Immune Response , Positive Regulation of Endopeptidase Activity

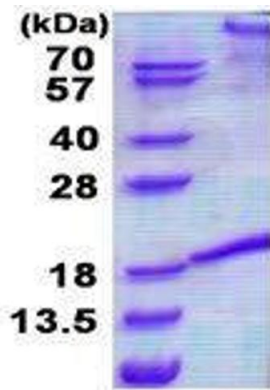
Application Details

Restrictions:	For Research Use only
---------------	-----------------------

Handling

Format:	Liquid
Concentration:	1 mg/mL
Buffer:	Supplied in liquid form in 20 mM Tris-HCl buffer (pH 8.0) containing 0.4M urea, 10 % glycerol
Storage:	4 °C/-20 °C/-80 °C

Images



15% SDS-PAGE (3ug)

SDS-PAGE

Image 1. Figure annotation denotes ug of protein loaded and % gel used.