

Datasheet for ABIN2129355

GALT Protein[Go to Product page](#)**1** Image

Overview

Quantity:	20 µg
Target:	GALT
Origin:	Human
Source:	Escherichia coli (E. coli)
Protein Type:	Recombinant
Application:	SDS-PAGE (SDS)

Product Details

Purity:	> 85 % pure
---------	-------------

Target Details

Target:	GALT
Alternative Name:	GALT (GALT Products)
Molecular Weight:	45.9 kDa

Application Details

Restrictions:	For Research Use only
---------------	-----------------------

Handling

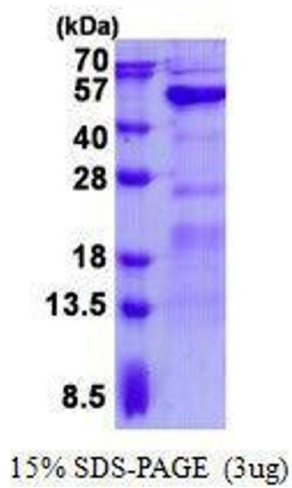
Format:	Liquid
Concentration:	250 µg/mL

Handling

Buffer: Supplied in liquid form in 20 mM Tris-HCl buffer (pH 8.5) containing 0.2M NaCl, 10 % glycerol.

Storage: 4 °C/-20 °C/-80 °C

Images



SDS-PAGE

Image 1. Figure annotation denotes ug of protein loaded and % gel used.