

Datasheet for ABIN2129595

**TIM3 Protein**[Go to Product page](#)**1** Image

## Overview

Quantity:	100 µg
Target:	TIM3 (TIM 3)
Origin:	Human
Source:	Escherichia coli (E. coli)
Protein Type:	Recombinant
Application:	SDS-PAGE (SDS)

## Product Details

Purity:	> 90 % pure
---------	-------------

## Target Details

Target:	TIM3 (TIM 3)
Alternative Name:	HAVCR2 ( <a href="#">TIM 3 Products</a> )
Target Type:	Virus
Molecular Weight:	22.7 kDa
Pathways:	<a href="#">Regulation of Lipid Metabolism by PPARalpha, Cancer Immune Checkpoints</a>

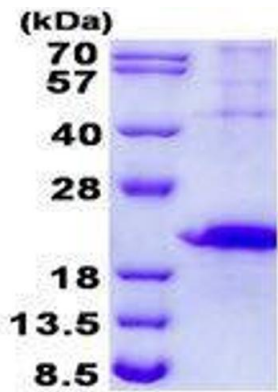
## Application Details

Restrictions:	For Research Use only
---------------	-----------------------

## Handling

Format:	Liquid
Concentration:	1 mg/mL
Buffer:	Supplied in liquid form in 20 mM Tris-HCl buffer ( pH 8.0) containing 0.4M urea, 10 % glycerol
Storage:	4 °C/-20 °C/-80 °C

## Images



15% SDS-PAGE (3ug)

### SDS-PAGE

**Image 1.** Figure annotation denotes ug of protein loaded and % gel used.