

Datasheet for ABIN2130380

LITAF Protein[Go to Product page](#)**1** Image

Overview

Quantity:	100 µg
Target:	LITAF
Origin:	Human
Source:	Escherichia coli (E. coli)
Protein Type:	Recombinant
Application:	SDS-PAGE (SDS)

Product Details

Purification: LITAF protein was purified using Protein G affinity chromatography

Target Details

Target:	LITAF
Alternative Name:	LITAF (LITAF Products)
Pathways:	Cellular Response to Molecule of Bacterial Origin

Application Details

Restrictions: For Research Use only

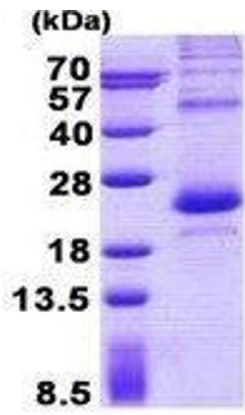
Handling

Format:	Liquid
Concentration:	1 mg/mL

Handling

Buffer:	Supplied in liquid form in 20 mM Tris-HCl buffer (pH 8.0) containing 0.4M Urea, 10 % glycerol
Storage:	4 °C/-20 °C/-80 °C

Images



15% SDS-PAGE (3ug)

SDS-PAGE

Image 1. Figure annotation denotes ug of protein loaded and % gel used.