

Datasheet for ABIN2130420

LYN Protein**1** Image[Go to Product page](#)

Overview

Quantity:	100 µg
Target:	LYN
Origin:	Human
Source:	Escherichia coli (E. coli)
Protein Type:	Recombinant
Application:	SDS-PAGE (SDS)

Product Details

Purification:	LYN protein was purified using Protein G affinity chromatography
Purity:	> 90 % pure

Target Details

Target:	LYN
Alternative Name:	LYN (LYN Products)
Molecular Weight:	61 Kda (535aa)
Pathways:	Fc-epsilon Receptor Signaling Pathway , Hormone Transport , Response to Growth Hormone Stimulus , Cellular Response to Molecule of Bacterial Origin , Regulation of Leukocyte Mediated Immunity , Positive Regulation of Immune Effector Process , CXCR4-mediated Signaling Events , Thromboxane A2 Receptor Signaling , Integrin Complex , BCR Signaling

Application Details

Restrictions: For Research Use only

Handling

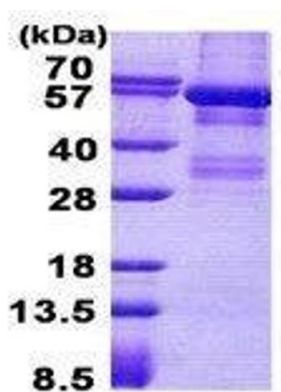
Format: Liquid

Concentration: 1 mg/mL

Buffer: Supplied in liquid form in 20 mM Tris-HCl buffer (pH 8.0) containing 0.4M urea, 10 % glycerol

Storage: 4 °C/-20 °C/-80 °C

Images



15% SDS-PAGE (3ug)

SDS-PAGE

Image 1. Figure annotation denotes ug of protein loaded and % gel used.