

Datasheet for ABIN2130524

**MED20 Protein**[Go to Product page](#)**1** Image

## Overview

Quantity:	100 µg
Target:	MED20
Origin:	Human
Source:	Escherichia coli (E. coli)
Protein Type:	Recombinant
Application:	SDS-PAGE (SDS)

## Product Details

Purity:	> 90 % pure
---------	-------------

## Target Details

Target:	MED20
Alternative Name:	MED20 ( <a href="#">MED20 Products</a> )
Molecular Weight:	25 kDa
Pathways:	<a href="#">Regulation of Lipid Metabolism by PPARalpha</a>

## Application Details

Restrictions:	For Research Use only
---------------	-----------------------

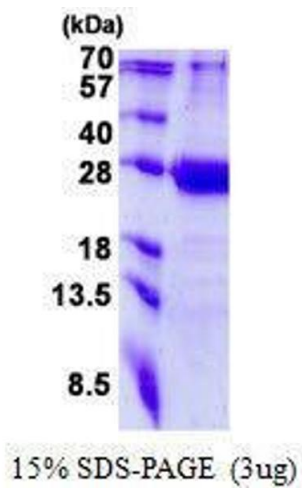
## Handling

Format:	Liquid
---------	--------

## Handling

Concentration:	250 µg/mL
Buffer:	Supplied in liquid form in 20 mM Tris-HCl buffer ( pH 8.5) containing 0.2M NaCl, 50 % glycerol, 1 mM DTT
Preservative:	Dithiothreitol (DTT)
Precaution of Use:	This product contains Dithiothreitol (DTT): a POISONOUS AND HAZARDOUS SUBSTANCE which should be handled by trained staff only.
Storage:	4 °C/-20 °C/-80 °C

## Images



### SDS-PAGE

**Image 1.** Figure annotation denotes ug of protein loaded and % gel used.