

Datasheet for ABIN2130705

**MYD88 Protein**[Go to Product page](#)**1** Image

## Overview

Quantity:	100 µg
Target:	MYD88
Origin:	Human
Source:	Escherichia coli (E. coli)
Protein Type:	Recombinant
Application:	SDS-PAGE (SDS)

## Product Details

Purity:	> 90 % pure
---------	-------------

## Target Details

Target:	MYD88
Alternative Name:	MYD88 ( <a href="#">MYD88 Products</a> )
Molecular Weight:	38.7 kDa
Pathways:	<a href="#">NF-kappaB Signaling</a> , <a href="#">TLR Signaling</a> , <a href="#">Neurotrophin Signaling Pathway</a> , <a href="#">Activation of Innate immune Response</a> , <a href="#">Cellular Response to Molecule of Bacterial Origin</a> , <a href="#">Positive Regulation of Immune Effector Process</a> , <a href="#">Production of Molecular Mediator of Immune Response</a> , <a href="#">Toll-Like Receptors Cascades</a>

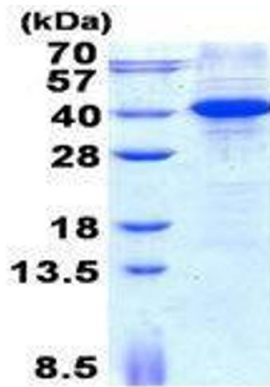
## Application Details

Restrictions:	For Research Use only
---------------	-----------------------

## Handling

Format:	Liquid
Concentration:	1 mg/mL
Buffer:	Supplied in liquid form in 20 mM Tris-HCl buffer ( pH 8.0) containing 0.4M urea, 10 % glycerol
Storage:	4 °C/-20 °C/-80 °C

## Images



15% SDS-PAGE (3ug)

### SDS-PAGE

**Image 1.** Figure annotation denotes ug of protein loaded and % gel used.