

Datasheet for ABIN2131033

**PARD6B Protein**[Go to Product page](#)**1** Image

## Overview

Quantity:	20 µg
Target:	PARD6B
Origin:	Human
Source:	Escherichia coli (E. coli)
Protein Type:	Recombinant
Application:	SDS-PAGE (SDS)

## Product Details

Purity:	> 85 % pure
---------	-------------

## Target Details

Target:	PARD6B
Alternative Name:	PARD6B ( <a href="#">PARD6B Products</a> )
Molecular Weight:	43.6 kDa
Pathways:	<a href="#">Cell-Cell Junction Organization</a>

## Application Details

Restrictions:	For Research Use only
---------------	-----------------------

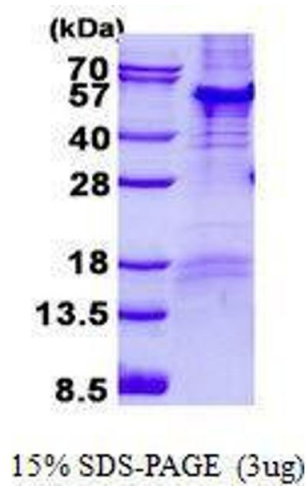
## Handling

Format:	Liquid
---------	--------

## Handling

Concentration:	500 µg/mL
Buffer:	Supplied in liquid form in 20 mM Tris-HCl buffer ( pH 8.0) containing 2M Urea, 20 % glycerol, 0.2M NaCl
Storage:	4 °C/-20 °C/-80 °C

## Images



### SDS-PAGE

**Image 1.** Figure annotation denotes µg of protein loaded and % gel used.