

Datasheet for ABIN2131228

**POLR2J2 Protein**[Go to Product page](#)**1** Image

## Overview

Quantity:	50 µg
Target:	POLR2J2
Origin:	Human
Source:	Escherichia coli (E. coli)
Protein Type:	Recombinant
Application:	SDS-PAGE (SDS)

## Product Details

Purification: POLR2J2 protein was purified using Protein G affinity chromatography

## Target Details

Target:	POLR2J2
Alternative Name:	POLR2J2 ( <a href="#">POLR2J2 Products</a> )

## Application Details

Restrictions: For Research Use only

## Handling

Format:	Liquid
Concentration:	250 µg/mL
Buffer:	Supplied in liquid form in 20 mM Tris-HCl buffer ( pH 8.0) containing 0.15M NaCl, 10 % glycerol,

## Handling

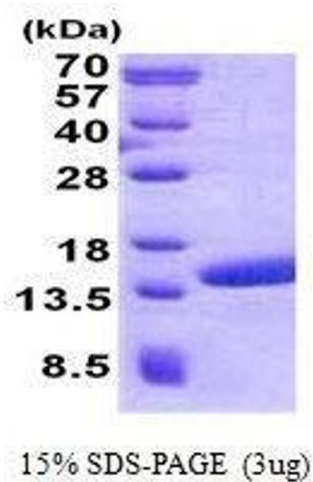
1 mM DTT, 250 mM Imidazole

Preservative: Dithiothreitol (DTT)

Precaution of Use: This product contains Dithiothreitol (DTT): a POISONOUS AND HAZARDOUS SUBSTANCE which should be handled by trained staff only.

Storage: 4 °C/-20 °C/-80 °C

## Images



### SDS-PAGE

**Image 1.** Figure annotation denotes ug of protein loaded and % gel used.