

Datasheet for ABIN2131431

**RAB10 Protein**[Go to Product page](#)**1** Image

## Overview

Quantity:	50 µg
Target:	RAB10
Origin:	Human
Source:	Escherichia coli (E. coli)
Protein Type:	Recombinant
Application:	SDS-PAGE (SDS)

## Product Details

Purification: RAB10 protein was purified using Protein G affinity chromatography

## Target Details

Target:	RAB10
Alternative Name:	RAB10 ( <a href="#">RAB10 Products</a> )
Pathways:	<a href="#">Asymmetric Protein Localization</a> , <a href="#">SARS-CoV-2 Protein Interactome</a>

## Application Details

Restrictions: For Research Use only

## Handling

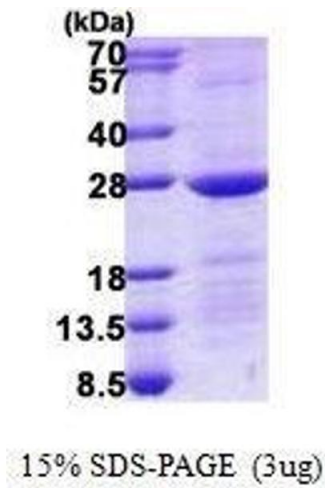
Format:	Liquid
Concentration:	500 µg/mL

## Handling

Buffer: Supplied in liquid form in 20 mM Tris-HCl buffer ( pH 8.0) containing 10 % glycerol 0.4M Urea

Storage: 4 °C/-20 °C/-80 °C

## Images



### SDS-PAGE

**Image 1.** Figure annotation denotes ug of protein loaded and % gel used.