

Datasheet for ABIN2131650

RSG1 Protein[Go to Product page](#)**1** Image

Overview

Quantity:	10 µg
Target:	RSG1 (C1orf89)
Origin:	Human
Source:	Escherichia coli (E. coli)
Protein Type:	Recombinant
Application:	SDS-PAGE (SDS)

Product Details

Purity:	> 85 % pure
---------	-------------

Target Details

Target:	RSG1 (C1orf89)
Alternative Name:	RSG1 (C1orf89 Products)
Molecular Weight:	30.9 kDa

Application Details

Restrictions:	For Research Use only
---------------	-----------------------

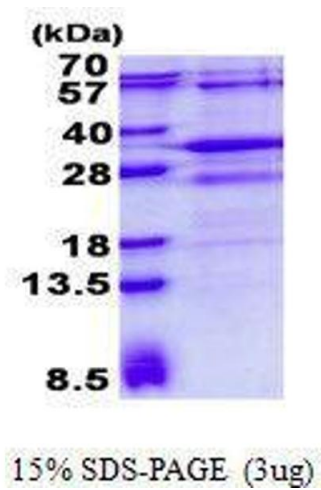
Handling

Format:	Liquid
Concentration:	250 µg/mL

Handling

Buffer:	Supplied in liquid form in 20 mM Tris-HCl buffer (pH 8.5) containing 0.2M NaCl, 50 % glycerol, 2 mM DTT
Preservative:	Dithiothreitol (DTT)
Precaution of Use:	This product contains Dithiothreitol (DTT): a POISONOUS AND HAZARDOUS SUBSTANCE which should be handled by trained staff only.
Storage:	4 °C/-20 °C/-80 °C

Images



SDS-PAGE

Image 1. Figure annotation denotes ug of protein loaded and % gel used.