

Datasheet for ABIN2131667

**RWDD1 Protein**[Go to Product page](#)**1** Image

## Overview

Quantity:	50 µg
Target:	RWDD1
Origin:	Human
Source:	Escherichia coli (E. coli)
Protein Type:	Recombinant
Application:	SDS-PAGE (SDS)

## Product Details

Purity:	> 85 % pure
---------	-------------

## Target Details

Target:	RWDD1
Alternative Name:	RWDD1 ( <a href="#">RWDD1 Products</a> )
Molecular Weight:	30.3 kDa

## Application Details

Restrictions:	For Research Use only
---------------	-----------------------

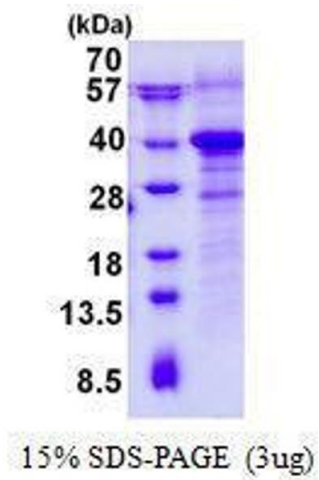
## Handling

Format:	Liquid
Concentration:	500 µg/mL

## Handling

Buffer:	Supplied in liquid form in 20 mM Tris-HCl buffer ( pH 8.0) containing 0.1M NaCl,10 % glycerol, 2 mM DTT
Preservative:	Dithiothreitol (DTT)
Precaution of Use:	This product contains Dithiothreitol (DTT): a POISONOUS AND HAZARDOUS SUBSTANCE which should be handled by trained staff only.
Storage:	4 °C/-20 °C/-80 °C

## Images



### SDS-PAGE

**Image 1.** Figure annotation denotes ug of protein loaded and % gel used.