

Datasheet for ABIN2131861

**SLAMF1 Protein**[Go to Product page](#)**1** Image

## Overview

Quantity:	20 µg
Target:	SLAMF1
Origin:	Human
Source:	Escherichia coli (E. coli)
Protein Type:	Recombinant
Application:	SDS-PAGE (SDS)

## Product Details

Purity:	> 85 % pure
---------	-------------

## Target Details

Target:	SLAMF1
Alternative Name:	SLAMF1 ( <a href="#">SLAMF1 Products</a> )
Molecular Weight:	26.7 kDa

## Application Details

Restrictions:	For Research Use only
---------------	-----------------------

## Handling

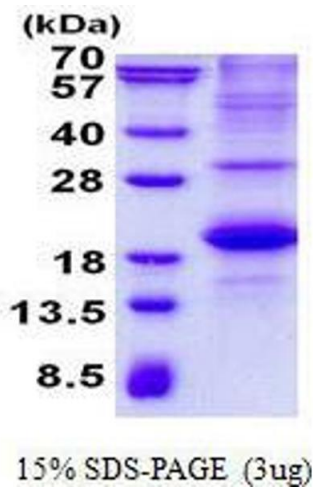
Format:	Liquid
Concentration:	500 µg/mL

## Handling

Buffer: Supplied in liquid form in 20 mM Tris-HCl buffer ( pH 8.0) containing 0.4M urea, 10 % glycerol

Storage: 4 °C/-20 °C/-80 °C

## Images



### SDS-PAGE

**Image 1.** Figure annotation denotes ug of protein loaded and % gel used.