

Datasheet for ABIN2131956

**STAMBPL1 Protein**[Go to Product page](#)**1** Image

## Overview

Quantity:	50 µg
Target:	STAMBPL1
Origin:	Human
Source:	Escherichia coli (E. coli)
Protein Type:	Recombinant
Application:	SDS-PAGE (SDS)

## Product Details

Purification: STAMBPL1 protein was purified using Protein G affinity chromatography

## Target Details

Target:	STAMBPL1
Alternative Name:	STAMBPL1 ( <a href="#">STAMBPL1 Products</a> )

## Application Details

Restrictions: For Research Use only

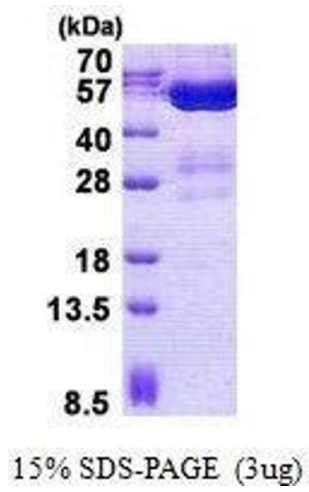
## Handling

Format:	Liquid
Concentration:	500 µg/mL
Buffer:	Supplied in liquid form in 20 mM Tris-HCl buffer ( pH 8.0) containing 0.2M NaCl, 20 % glycerol.

## Handling

Storage: 4 °C/-20 °C/-80 °C

## Images



### SDS-PAGE

**Image 1.** Figure annotation denotes ug of protein loaded and % gel used.