

Datasheet for ABIN2132592

XRCC3 Protein[Go to Product page](#)**1** Image

Overview

| | |
|---------------|----------------------------|
| Quantity: | 100 µg |
| Target: | XRCC3 |
| Origin: | Human |
| Source: | Escherichia coli (E. coli) |
| Protein Type: | Recombinant |
| Application: | SDS-PAGE (SDS) |

Product Details

| | |
|---------|-------------|
| Purity: | > 85 % pure |
|---------|-------------|

Target Details

| | |
|-------------------|--|
| Target: | XRCC3 |
| Alternative Name: | XRCC3 (XRCC3 Products) |
| Molecular Weight: | 40.0 kDa |
| Pathways: | DNA Damage Repair |

Application Details

| | |
|---------------|-----------------------|
| Restrictions: | For Research Use only |
|---------------|-----------------------|

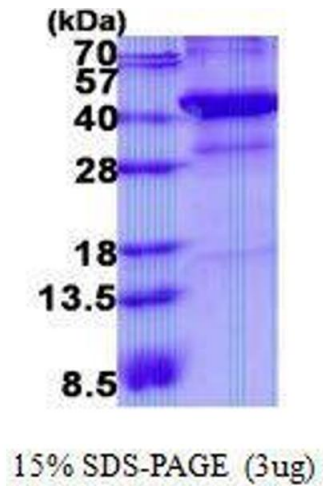
Handling

| | |
|---------|--------|
| Format: | Liquid |
|---------|--------|

Handling

| | |
|----------------|--|
| Concentration: | 1 mg/mL |
| Buffer: | Supplied in liquid form in 20 mM Tris-HCl buffer (pH 8.0) containing 0.4M urea, 10 % glycerol |
| Storage: | 4 °C/-20 °C/-80 °C |

Images



SDS-PAGE

Image 1. Figure annotation denotes ug of protein loaded and % gel used.