

## Datasheet for ABIN213332 anti-GPR20 antibody (Cytoplasmic Domain)

[Go to Product page](#)

### 2 Images

#### Overview

Quantity:	50 µg
Target:	GPR20
Binding Specificity:	Cytoplasmic Domain
Reactivity:	Human, Cow
Host:	Rabbit
Clonality:	Polyclonal
Conjugate:	This GPR20 antibody is un-conjugated
Application:	Immunohistochemistry (IHC), Immunohistochemistry (Paraffin-embedded Sections) (IHC (p))

#### Product Details

Brand:	IHC-plus™
Immunogen:	Synthetic 18 amino acid peptide from 3rd cytoplasmic domain of human GPR20. Percent identity with other species by BLAST analysis: Human, Bovine (100%), Gorilla, Monkey, Marmoset, Mouse, Horse, Rabbit, Dog, Bat (94%), Hamster, Elephant (89%), Rat (83%).  Type of Immunogen: Synthetic peptide
Specificity:	Human GPR20. BLAST analysis of the peptide immunogen showed no homology with other human proteins, except KIF1A (44 %), KIF1B (44 %).
Predicted Reactivity:	Percent identity with other species by BLAST analysis: Human, Bovine (100%) Gorilla, Monkey, Marmoset, Mouse, Horse, Rabbit, Dog, Bat (94%) Hamster, Elephant (89%) Rat (83%).
Purification:	Immunoaffinity purified

## Target Details

Target:	GPR20
Alternative Name:	GPR20 ( <a href="#">GPR20 Products</a> )
Background:	Name/Gene ID: GPR20 Subfamily: Orphan-A Family: GPCR  Synonyms: GPR20, G-protein coupled receptor 20, G protein-coupled receptor 20
Gene ID:	2843

## Application Details

Application Notes:	Approved: IHC, IHC-P (20 µg/mL)  Usage: Immunohistochemistry: This antibody was validated for use in immunohistochemistry on a panel of 21 formalin-fixed, paraffin-embedded (FFPE) human tissues after heat induced antigen retrieval in pH 6.0 citrate buffer. After incubation with the primary antibody, slides were incubated with biotinylated secondary antibody, followed by alkaline phosphatase-streptavidin and chromogen. The stained slides were evaluated by a pathologist to confirm staining specificity. The optimal working concentration for this antibody was determined to be 20 µg/mL.
Comment:	Target Species of Antibody: Human
Restrictions:	For Research Use only

## Handling

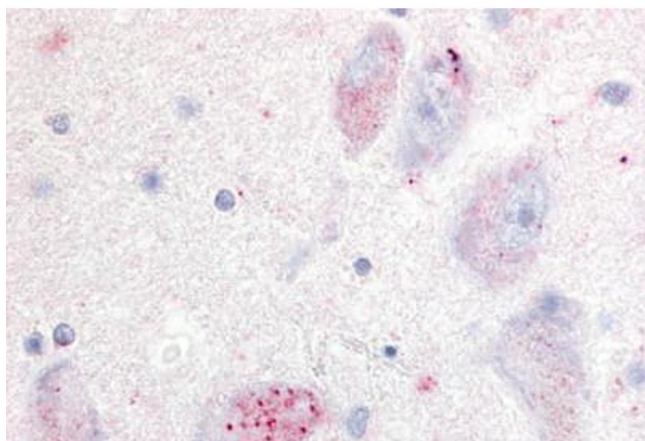
Format:	Liquid
Concentration:	Lot specific
Buffer:	PBS, less than 0.1 % sodium azide.
Preservative:	Sodium azide
Precaution of Use:	This product contains Sodium azide: a POISONOUS AND HAZARDOUS SUBSTANCE which should be handled by trained staff only.
Storage:	4 °C,-20 °C
Storage Comment:	Aliquot and store undiluted at -20°C or below for up to 1 year. Can be stored undiluted at 4°C for

## Handling

up to 1 month. Avoid freeze-thaw cycles.

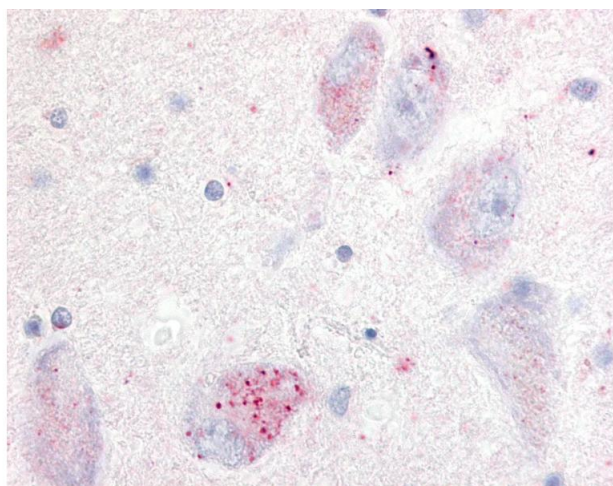
Expiry Date: 12 months

## Images



### Immunohistochemistry (Paraffin-embedded Sections)

**Image 1.** Human Basal Nucleus of Meynert (formalin-fixed, paraffin-embedded) stained with GPR20 antibody ABIN213332 at 20 ug/ml followed by biotinylated goat anti-rabbit IgG secondary antibody ABIN481713, alkaline phosphatase-streptavidin and chromogen.



### Immunohistochemistry

**Image 2.** Anti-GPR20 antibody IHC of human basal nucleus of Meynert. Immunohistochemistry of formalin-fixed, paraffin-embedded tissue after heat-induced antigen retrieval.