

Datasheet for ABIN213334
anti-GPR22 antibody (C-Term)

2 Images

[Go to Product page](#)

Overview

Quantity:	50 µg
Target:	GPR22
Binding Specificity:	C-Term
Reactivity:	Human, Mouse, Rat, Horse, Cow, Pig, Rabbit, Monkey, Bat, Chicken, Zebrafish (Danio rerio), Hamster, Xenopus laevis
Host:	Rabbit
Clonality:	Polyclonal
Conjugate:	This GPR22 antibody is un-conjugated
Application:	Immunohistochemistry (IHC), Immunohistochemistry (Paraffin-embedded Sections) (IHC (p))

Product Details

Brand:	IHC-plus™
Immunogen:	<p>Synthetic 16 amino acid peptide from C-terminal cytoplasmic domain of human GPR22.</p> <p>Percent identity with other species by BLAST analysis: Human, Gorilla, Monkey, Marmoset, Mouse, Rat, Bat, Bovine, Hamster, Elephant, Panda, Horse, Rabbit, Pig, Turkey, Chicken, Lizard, Xenopus, Pufferfish, Zebrafish, Stickleback (100%).</p> <p>Type of Immunogen: Synthetic peptide</p>
Specificity:	Human GPR22. BLAST analysis of the peptide immunogen showed no homology with other human proteins.
Predicted Reactivity:	Percent identity with other species by BLAST analysis: Human, Gorilla, Monkey, Marmoset,

Product Details

Mouse, Rat, Bat, Bovine, Hamster, Elephant, Panda, Horse, Rabbit, Pig, Turkey, Chicken, Lizard, Xenopus, Pufferfish, Zebrafish, Stickleback (100%).

Purification: Immunoaffinity purified

Target Details

Target: GPR22

Alternative Name: GPR22 ([GPR22 Products](#))

Background: Name/Gene ID: GPR22

Subfamily: Orphan-A

Family: GPCR

Synonyms: GPR22, G protein-coupled receptor 22

Gene ID: 2845

Application Details

Application Notes: Approved: IHC, IHC-P (20 µg/mL)

Usage: Immunohistochemistry: This antibody was validated for use in immunohistochemistry on a panel of 21 formalin-fixed, paraffin-embedded (FFPE) human tissues after heat induced antigen retrieval in pH 6.0 citrate buffer. After incubation with the primary antibody, slides were incubated with biotinylated secondary antibody, followed by alkaline phosphatase-streptavidin and chromogen. The stained slides were evaluated by a pathologist to confirm staining specificity. The optimal working concentration for this antibody was determined to be 10 µg/mL.

Comment: Target Species of Antibody: Human

Restrictions: For Research Use only

Handling

Format: Liquid

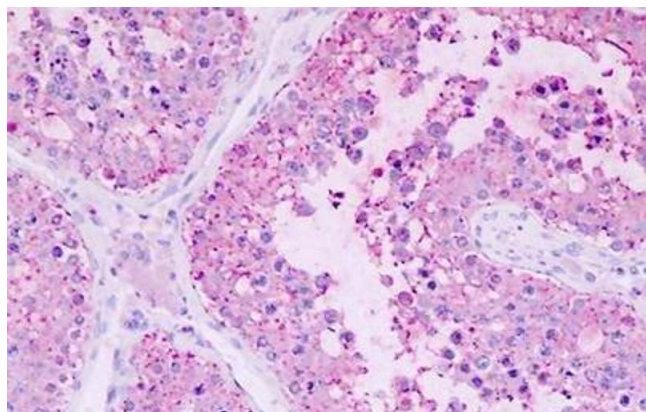
Concentration: Lot specific

Buffer: PBS, less than 0.1 % sodium azide.

Handling

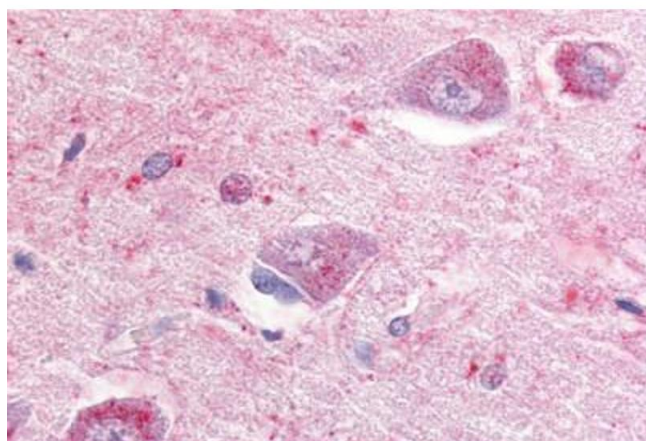
Preservative:	Sodium azide
Precaution of Use:	This product contains Sodium azide: a POISONOUS AND HAZARDOUS SUBSTANCE which should be handled by trained staff only.
Storage:	4 °C,-20 °C
Storage Comment:	Aliquot and store undiluted at -20°C or below for up to 1 year. Can be stored undiluted at 4°C for up to 1 month. Avoid freeze-thaw cycles.
Expiry Date:	12 months

Images



Immunohistochemistry

Image 1. Human Testis: Formalin-Fixed, Paraffin-Embedded (FFPE)



Immunohistochemistry (Paraffin-embedded Sections)

Image 2. Human Brain, Hippocampus (formalin-fixed, paraffin-embedded) stained with GPR22 antibody ABIN213334 at 10 ug/ml followed by biotinylated goat anti-rabbit IgG secondary antibody ABIN481713, alkaline phosphatase-streptavidin and chromogen.