

Datasheet for ABIN213337
anti-CCR10 antibody (C-Term)



[Go to Product page](#)

2 Images

Overview

Quantity:	50 µg
Target:	CCR10
Binding Specificity:	C-Term
Reactivity:	Human, Mouse, Rat, Dog, Pig, Bat, Cow, Monkey
Host:	Rabbit
Clonality:	Polyclonal
Conjugate:	This CCR10 antibody is un-conjugated
Application:	ELISA, Immunohistochemistry (IHC), Immunohistochemistry (Paraffin-embedded Sections) (IHC (p))

Product Details

Brand:	IHC-plus™
Immunogen:	Synthetic 17 amino acid peptide from C-terminus of human CCR10. Percent identity with other species by BLAST analysis: Human, Gorilla, Gibbon, Monkey, Marmoset, Mouse, Rat, Bovine, Dog, Bat, Pig (100%), Hamster, Elephant, Rabbit (94%), Opossum (88%). Type of Immunogen: Synthetic peptide
Specificity:	Human CCR10. BLAST analysis of the peptide immunogen showed no homology with other human proteins.
Predicted Reactivity:	Percent identity with other species by BLAST analysis: Human, Gorilla, Gibbon, Monkey, Marmoset, Mouse, Rat, Bovine, Dog, Bat, Pig (100%) Hamster, Elephant, Rabbit (94%) Opossum

Product Details

(88%).

Purification: Immunoaffinity purified

Target Details

Target: CCR10

Alternative Name: CCR10 / GPR2 ([CCR10 Products](#))

Background: Name/Gene ID: CCR10

Subfamily: Chemokine

Family: GPCR

Synonyms: CCR10, C-C CKR-10, CC-CKR-10, CCR-10, C-C chemokine receptor type 10, CC chemokine receptor 10, G-protein coupled receptor 2, GPR2, G protein-coupled receptor 2

Gene ID: 2826

Application Details

Application Notes: Approved: ELISA, IHC, IHC-P (5 µg/mL)

Usage: Immunohistochemistry: This antibody was validated for use in immunohistochemistry on a panel of 21 formalin-fixed, paraffin-embedded (FFPE) human tissues after heat induced antigen retrieval in pH 6.0 citrate buffer. After incubation with the primary antibody, slides were incubated with biotinylated secondary antibody, followed by alkaline phosphatase-streptavidin and chromogen. The stained slides were evaluated by a pathologist to confirm staining specificity. The optimal working concentration for this antibody was determined to be 5 µg/mL.

Comment: Target Species of Antibody: Human

Restrictions: For Research Use only

Handling

Format: Liquid

Concentration: Lot specific

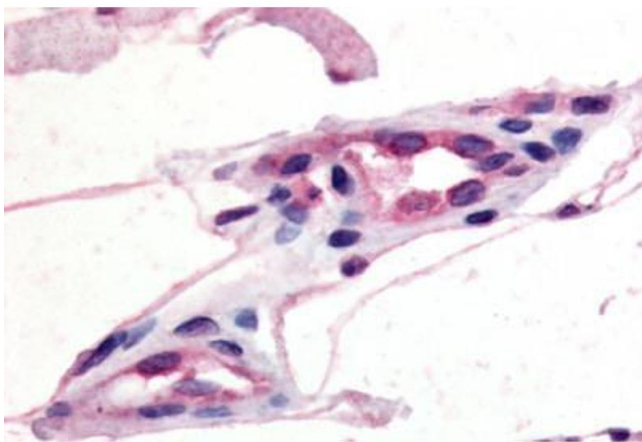
Buffer: PBS, less than 0.1 % sodium azide.

Preservative: Sodium azide

Handling

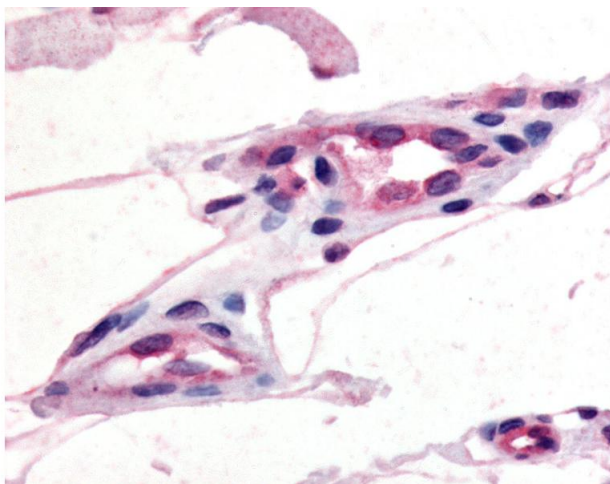
Precaution of Use:	This product contains Sodium azide: a POISONOUS AND HAZARDOUS SUBSTANCE which should be handled by trained staff only.
Storage:	4 °C,-20 °C
Storage Comment:	Aliquot and store undiluted at -20°C or below for up to 1 year. Can be stored undiluted at 4°C for up to 1 month. Avoid freeze-thaw cycles.
Expiry Date:	12 months

Images



Immunohistochemistry (Paraffin-embedded Sections)

Image 1. Human Capillaries (formalin-fixed, paraffin-embedded) stained with GPR21 antibody ABIN213337 at 5 ug/ml followed by biotinylated goat anti-rabbit IgG secondary antibody ABIN481713, alkaline phosphatase-streptavidin and chromogen.



Immunohistochemistry

Image 2. Anti-CCR10 antibody IHC of human capillaries. Immunohistochemistry of formalin-fixed, paraffin-embedded tissue after heat-induced antigen retrieval.