

Datasheet for ABIN213338  
**anti-GPR3 antibody (Extracellular Domain)**[Go to Product page](#)

## 2 Images

## Overview

Quantity:	50 µg
Target:	GPR3
Binding Specificity:	Extracellular Domain
Reactivity:	Human, Monkey, Cow, Rabbit
Host:	Rabbit
Clonality:	Polyclonal
Conjugate:	This GPR3 antibody is un-conjugated
Application:	ELISA, Immunohistochemistry (IHC), Immunohistochemistry (Paraffin-embedded Sections) (IHC (p))

## Product Details

Brand:	IHC-plus™
Immunogen:	Synthetic 16 amino acid peptide from 3rd extracellular domain of human GPR3. Percent identity with other species by BLAST analysis: Human, Gorilla, Gibbon, Monkey, Marmoset, Bovine, Elephant, Panda, Rabbit (100%), Rat, Pig (94%), Mouse, Hamster, Horse (88%).  Type of Immunogen: Synthetic peptide
Specificity:	Human GPR3. BLAST analysis of the peptide immunogen showed no homology with other human proteins, except TKT (44 %).
Predicted Reactivity:	Percent identity with other species by BLAST analysis: Human, Gorilla, Gibbon, Monkey, Marmoset, Bovine, Elephant, Panda, Rabbit (100%) Rat, Pig (94%) Mouse, Hamster, Horse

## Product Details

(88%).

Purification: Immunoaffinity purified

## Target Details

Target: GPR3

Alternative Name: GPR3 ([GPR3 Products](#))

Background: Name/Gene ID: GPR3  
Subfamily: Lysophospholipid/Lysosphingolipid  
Family: GPCR

Synonyms: GPR3, ACCA, ACCA orphan receptor, G protein-coupled receptor 3, GPCR3, Hacca, G-protein coupled receptor 3

Gene ID: 2827

Pathways: [cAMP Metabolic Process](#)

## Application Details

Application Notes: Approved: ELISA, IHC, IHC-P (40 µg/mL)

Usage: Immunohistochemistry: This antibody was validated for use in immunohistochemistry on a panel of 21 formalin-fixed, paraffin-embedded (FFPE) human tissues after heat induced antigen retrieval in pH 6.0 citrate buffer. After incubation with the primary antibody, slides were incubated with biotinylated secondary antibody, followed by alkaline phosphatase-streptavidin and chromogen. The stained slides were evaluated by a pathologist to confirm staining specificity. The optimal working concentration for this antibody was determined to be 40 µg/mL.

Comment: Target Species of Antibody: Human

Restrictions: For Research Use only

## Handling

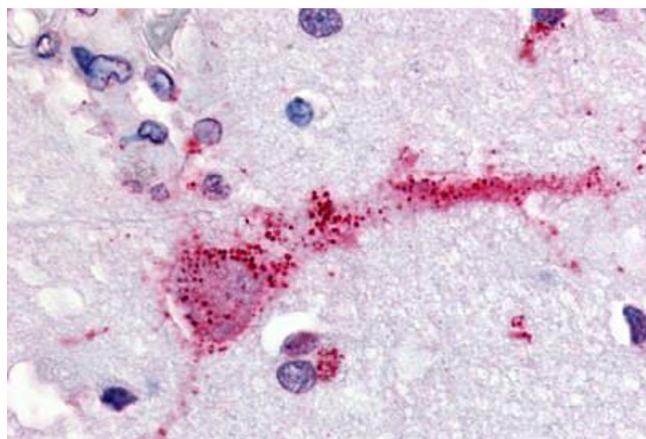
Format: Liquid

Concentration: Lot specific

## Handling

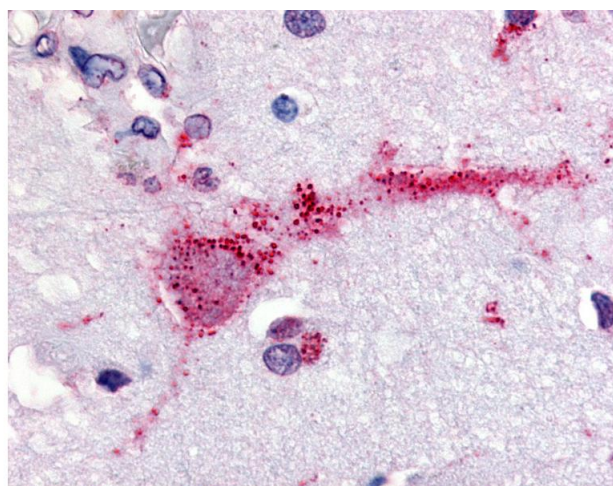
Buffer:	PBS, less than 0.1 % sodium azide.
Preservative:	Sodium azide
Precaution of Use:	This product contains Sodium azide: a POISONOUS AND HAZARDOUS SUBSTANCE which should be handled by trained staff only.
Storage:	4 °C,-20 °C
Storage Comment:	Aliquot and store undiluted at -20°C or below for up to 1 year. Can be stored undiluted at 4°C for up to 1 month. Avoid freeze-thaw cycles.
Expiry Date:	12 months

## Images



### Immunohistochemistry (Paraffin-embedded Sections)

**Image 1.** Human Brain (formalin-fixed, paraffin-embedded) stained with GPR3 antibody ABIN213338 at 40 ug/ml followed by biotinylated goat anti-rabbit IgG secondary antibody ABIN481713, alkaline phosphatase-streptavidin and chromogen.



### Immunohistochemistry

**Image 2.** Anti-GPR3 antibody IHC of human brain. Immunohistochemistry of formalin-fixed, paraffin-embedded tissue after heat-induced antigen retrieval.