

Datasheet for ABIN213341
anti-GPR171 antibody (Extracellular Domain)

3 Images

[Go to Product page](#)

Overview

Quantity:	50 µg
Target:	GPR171
Binding Specificity:	Extracellular Domain
Reactivity:	Human, Cow, Monkey, Rabbit
Host:	Rabbit
Clonality:	Polyclonal
Conjugate:	This GPR171 antibody is un-conjugated
Application:	Immunohistochemistry (IHC), Immunohistochemistry (Paraffin-embedded Sections) (IHC (p))

Product Details

Brand:	IHC-plus™
Immunogen:	Synthetic 16 amino acid peptide from 3rd extracellular domain of human GPR171. Percent identity with other species by BLAST analysis: Human, Gorilla, Gibbon, Monkey, Bovine, Rabbit (100%), Mouse, Rat, Dog, Bat, Elephant, Panda (94%), Marmoset, Horse, Opossum (88%). Type of Immunogen: Synthetic peptide
Specificity:	Human GPR171. BLAST analysis of the peptide immunogen showed no homology with other human proteins.
Predicted Reactivity:	Percent identity with other species by BLAST analysis: Human, Gorilla, Gibbon, Monkey, Bovine, Rabbit (100%) Mouse, Rat, Dog, Bat, Elephant, Panda (94%) Marmoset, Horse, Opossum (88%).
Purification:	Immunoaffinity purified

Target Details

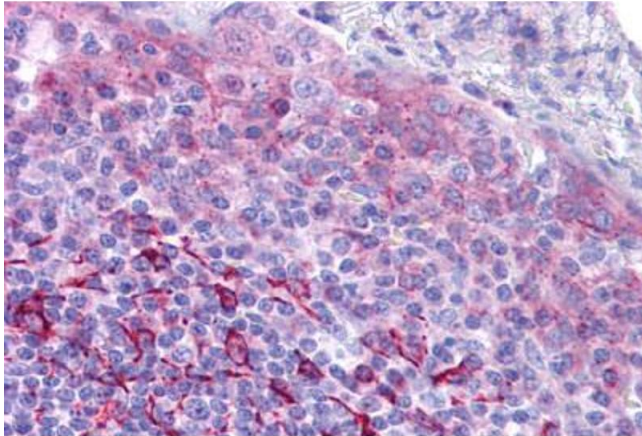
Target:	GPR171
Alternative Name:	GPR171 (GPR171 Products)
Background:	Name/Gene ID: GPR171 Subfamily: Platelet activating factor Family: GPCR Synonyms: GPR171, H963, G protein-coupled receptor 171
Gene ID:	29909

Application Details

Application Notes:	Approved: IHC, IHC-P (5 - 10 µg/mL)
Comment:	Target Species of Antibody: Human
Restrictions:	For Research Use only

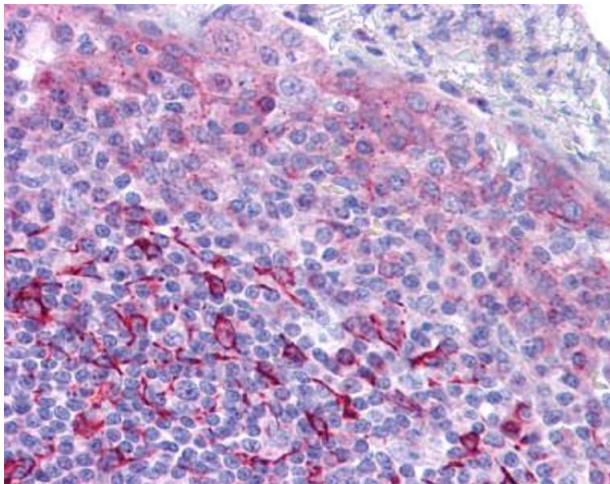
Handling

Format:	Liquid
Concentration:	Lot specific
Buffer:	PBS, less than 0.1 % sodium azide.
Preservative:	Sodium azide
Precaution of Use:	This product contains Sodium azide: a POISONOUS AND HAZARDOUS SUBSTANCE which should be handled by trained staff only.
Storage:	4 °C, -20 °C
Storage Comment:	Aliquot and store undiluted at -20°C or below for up to 1 year. Can be stored undiluted at 4°C for up to 1 month. Avoid freeze-thaw cycles.
Expiry Date:	12 months



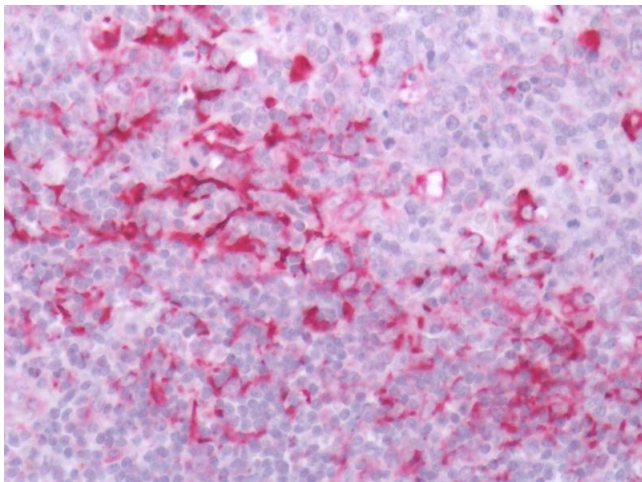
Immunohistochemistry (Formalin-fixed Paraffin-embedded Sections)

Image 1. Human Tonsil: Formalin-Fixed, Paraffin-Embedded (FFPE)



Immunohistochemistry

Image 2. Anti-GPR171 antibody IHC of human tonsil. Immunohistochemistry of formalin-fixed, paraffin-embedded tissue after heat-induced antigen retrieval.



Immunohistochemistry (Paraffin-embedded Sections)

Image 3. Human Tonsil: Formalin-Fixed, Paraffin-Embedded (FFPE)