

Datasheet for ABIN213346  
**anti-CHRM3 antibody (Cytoplasmic Domain)**

## 2 Images

[Go to Product page](#)

## Overview

|                      |   |
|----------------------|---|
| Quantity:            | 50 µg   |
| Target:              | CHRM3   |
| Binding Specificity: | Cytoplasmic Domain  |
| Reactivity:          | Human, Monkey   |
| Host:                | Rabbit  |
| Clonality:           | Polyclonal  |
| Conjugate:           | This CHRM3 antibody is un-conjugated  |
| Application:         | ELISA, Immunohistochemistry (IHC), Immunohistochemistry (Paraffin-embedded Sections)<br>(IHC (p)) |

## Product Details

|                       |  |
|-----------------------|--|
| Brand:                | IHC-plus™  |
| Immunogen:            | Synthetic 18 amino acid peptide from 3rd cytoplasmic domain of human CHRM3 / M3. Percent identity with other species by BLAST analysis: Human, Chimpanzee, Gorilla, Gibbon, Monkey, Marmoset (100%), Orangutan, Sheep, Bovine, Hamster, Horse (94%), Elephant, Pig (89%), Mouse, Rat, Dog, Rabbit, Opossum, Guinea pig, Turkey, Chicken, Lizard (83%).<br><br>Type of Immunogen: Synthetic peptide |
| Specificity:          | Human CHRM3 / M3. BLAST analysis of the peptide immunogen showed no homology with other human proteins.  |
| Predicted Reactivity: | Percent identity with other species by BLAST analysis: Human, Chimpanzee, Gorilla, Gibbon,   |

## Product Details

Monkey, Marmoset (100%) Orangutan, Sheep, Bovine, Hamster, Horse (94%) Elephant, Pig (89%) Mouse, Rat, Dog, Rabbit, Opossum, Guinea pig, Turkey, Chicken, Lizard (83%).

Purification: Immunoaffinity purified

## Target Details

Target: CHRM3

Alternative Name: CHRM3 / M3 ([CHRM3 Products](#))

Background: Name/Gene ID: CHRM3  
Subfamily: Acetylcholine  
Family: GPCR

Synonyms: CHRM3, M3, Muscarinic receptor M3, Muscarinic M3 receptor, EGBRS, HM3, M3 muscarinic receptor

Gene ID: 1131

Pathways: [Synaptic Membrane](#)

## Application Details

Application Notes: Approved: ELISA, IHC, IHC-P (10 µg/mL)

Usage: Immunohistochemistry: This antibody was validated for use in immunohistochemistry on a panel of 21 formalin-fixed, paraffin-embedded (FFPE) human tissues after heat induced antigen retrieval in pH 6.0 citrate buffer. After incubation with the primary antibody, slides were incubated with biotinylated secondary antibody, followed by alkaline phosphatase-streptavidin and chromogen. The stained slides were evaluated by a pathologist to confirm staining specificity. The optimal working concentration for this antibody was determined to be 10 µg/mL.

Comment: Target Species of Antibody: Human

Restrictions: For Research Use only

## Handling

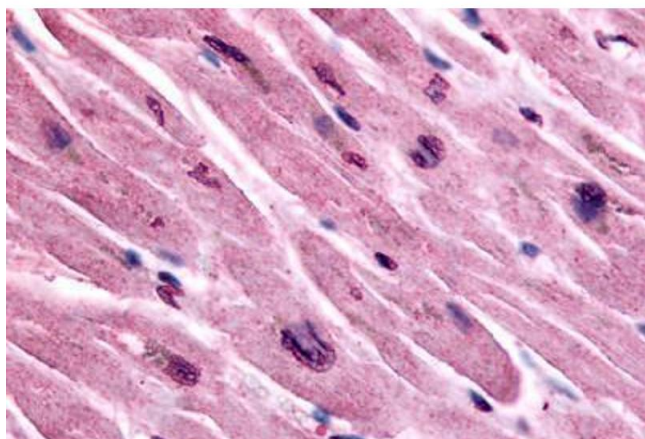
Format: Liquid

Concentration: Lot specific

## Handling

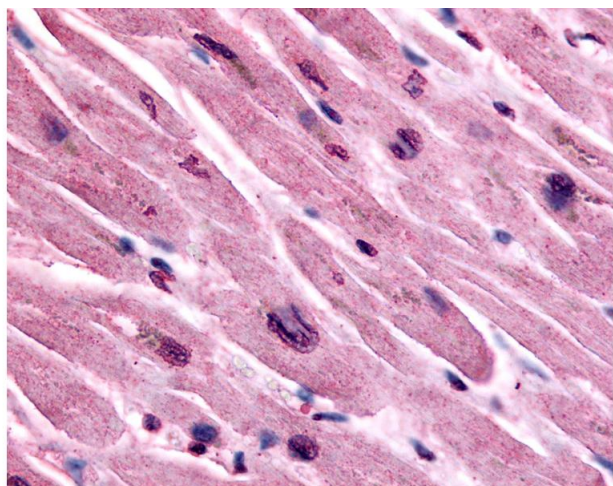
|                    |   |
|--------------------|---|
| Buffer:            | PBS, less than 0.1 % sodium azide.  |
| Preservative:      | Sodium azide  |
| Precaution of Use: | This product contains Sodium azide: a POISONOUS AND HAZARDOUS SUBSTANCE which should be handled by trained staff only.                      |
| Storage:           | 4 °C,-20 °C   |
| Storage Comment:   | Aliquot and store undiluted at -20°C or below for up to 1 year. Can be stored undiluted at 4°C for up to 1 month. Avoid freeze-thaw cycles. |
| Expiry Date:       | 12 months   |

## Images



### Immunohistochemistry (Paraffin-embedded Sections)

**Image 1.** Human Heart (formalin-fixed, paraffin-embedded) stained with CHRM3 antibody ABIN213346 at 10 ug/ml followed by biotinylated goat anti-rabbit IgG secondary antibody ABIN481713, alkaline phosphatase-streptavidin and chromogen.



### Immunohistochemistry

**Image 2.** Anti-CHRM3 / M3 antibody IHC of human heart. Immunohistochemistry of formalin-fixed, paraffin-embedded tissue after heat-induced antigen retrieval.