

Datasheet for ABIN213352
anti-GPR175 antibody (Cytoplasmic Domain)

2 Images

[Go to Product page](#)

Overview

Quantity:	50 µg
Target:	GPR175 (TPRA1)
Binding Specificity:	Cytoplasmic Domain
Reactivity:	Human, Mouse, Rat, Dog, Horse, Cow, Pig, Bat, Hamster
Host:	Rabbit
Clonality:	Polyclonal
Conjugate:	This GPR175 antibody is un-conjugated
Application:	Immunohistochemistry (Paraffin-embedded Sections) (IHC (p)), Immunohistochemistry (IHC)

Product Details

Brand:	IHC-plus™
Immunogen:	<p>Synthetic 17 amino acid peptide from 2nd cytoplasmic domain of human TPRA1 / GPR175.</p> <p>Percent identity with other species by BLAST analysis: Human, Gorilla, Gibbon, Marmoset, Mouse, Rat, Dog, Bovine, Bat, Hamster, Elephant, Panda, Horse, Pig, Platypus (100%), Monkey, Rabbit, Opossum, Turkey, Lizard, Zebrafish (94%), Chicken, Seabass, Salmon, Stickleback (88%).</p> <p>Type of Immunogen: Synthetic peptide</p>
Specificity:	Human TPRA1 / GPR175. BLAST analysis of the peptide immunogen showed no homology with other human proteins.
Predicted Reactivity:	Percent identity with other species by BLAST analysis: Human, Gorilla, Gibbon, Marmoset, Mouse, Rat, Dog, Bovine, Bat, Hamster, Elephant, Panda, Horse, Pig, Platypus (100%) Monkey,

Product Details

Rabbit, Opossum, Turkey, Lizard, Zebrafish (94%) Chicken, Seabass, Salmon, Stickleback (88%).

Purification: Immunoaffinity purified

Target Details

Target: GPR175 (TPRA1)

Alternative Name: TPRA1 / GPR175 ([TPRA1 Products](#))

Background: Name/Gene ID: TPRA1

Subfamily: Orphan-U

Family: GPCR

Synonyms: TPRA1, G protein-coupled receptor 175, Transmembrane protein 227, TMEM227, TPRA40, GPR175

Gene ID: 131601

Application Details

Application Notes: Approved: IHC, IHC-P (10 - 20 µg/mL)

Usage: Immunohistochemistry: This antibody was validated for use in immunohistochemistry on a panel of 21 formalin-fixed, paraffin-embedded (FFPE) human tissues after heat induced antigen retrieval in pH 6.0 citrate buffer. After incubation with the primary antibody, slides were incubated with biotinylated secondary antibody, followed by alkaline phosphatase-streptavidin and chromogen. The stained slides were evaluated by a pathologist to confirm staining specificity. The optimal working concentration for this antibody was determined to be 10 µg/mL.

Comment: Target Species of Antibody: Human

Restrictions: For Research Use only

Handling

Format: Liquid

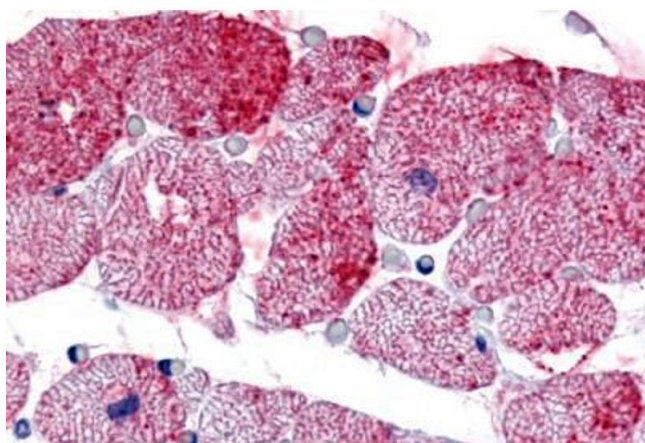
Concentration: Lot specific

Buffer: PBS, less than 0.1 % sodium azide.

Handling

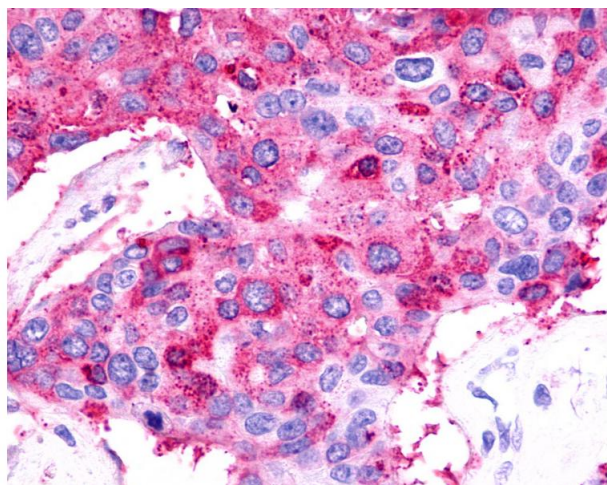
Preservative:	Sodium azide
Precaution of Use:	This product contains Sodium azide: a POISONOUS AND HAZARDOUS SUBSTANCE which should be handled by trained staff only.
Storage:	4 °C,-20 °C
Storage Comment:	Aliquot and store undiluted at -20°C or below for up to 1 year. Can be stored undiluted at 4°C for up to 1 month. Avoid freeze-thaw cycles.
Expiry Date:	12 months

Images



Immunohistochemistry (Paraffin-embedded Sections)

Image 1. Human Heart (formalin-fixed, paraffin-embedded) stained with GPR175 antibody ABIN213352 at 10 ug/ml followed by biotinylated goat anti-rabbit IgG secondary antibody ABIN481713, alkaline phosphatase-streptavidin and chromogen.



Immunohistochemistry

Image 2. Anti-TPRA1 / GPR175 antibody IHC of human Breast, Carcinoma. Immunohistochemistry of formalin-fixed, paraffin-embedded tissue after heat-induced antigen retrieval.