

Datasheet for ABIN213360
anti-NPBWR1 antibody (Cytoplasmic Domain)

2 Images

[Go to Product page](#)

Overview

Quantity:	50 µg
Target:	NPBWR1
Binding Specificity:	Cytoplasmic Domain
Reactivity:	Human
Host:	Rabbit
Clonality:	Polyclonal
Conjugate:	This NPBWR1 antibody is un-conjugated
Application:	ELISA, Immunohistochemistry (Paraffin-embedded Sections) (IHC (p)), Immunohistochemistry (IHC)

Product Details

Brand:	IHC-plus™
Immunogen:	Synthetic 20 amino acid peptide from 3rd cytoplasmic domain of human NPBWR1. Percent identity with other species by BLAST analysis: Human, Gibbon, Marmoset (100%), Gorilla, Monkey (95%), Bovine, Elephant, Panda, Rabbit, Opossum (85%), Mouse, Rat, Horse (80%). Type of Immunogen: Synthetic peptide
Specificity:	Human NPBWR1. BLAST analysis of the peptide immunogen showed no homology with other human proteins.
Predicted Reactivity:	Percent identity with other species by BLAST analysis: Human, Gibbon, Marmoset (100%) Gorilla, Monkey (95%) Bovine, Elephant, Panda, Rabbit, Opossum (85%) Mouse, Rat, Horse

Product Details

(80%).

Purification: Immunoaffinity purified

Target Details

Target: NPBWR1

Alternative Name: NPBWR1 / GPR7 ([NPBWR1 Products](#))

Background: Name/Gene ID: NPBWR1
Subfamily: Neuropeptide
Family: GPCR

Synonyms: NPBWR1, G protein-coupled receptor 7, GPR7, Neuropeptide B/W receptor 1, Neuropeptides B/W receptor 1, G-protein coupled receptor 7

Gene ID: 2831

Application Details

Application Notes: Approved: ELISA, IHC, IHC-P (20 µg/mL)

Usage: Immunohistochemistry: This antibody was validated for use in immunohistochemistry on a panel of 21 formalin-fixed, paraffin-embedded (FFPE) human tissues after heat induced antigen retrieval in pH 6.0 citrate buffer. After incubation with the primary antibody, slides were incubated with biotinylated secondary antibody, followed by alkaline phosphatase-streptavidin and chromogen. The stained slides were evaluated by a pathologist to confirm staining specificity. The optimal working concentration for this antibody was determined to be 20 µg/mL.

Comment: Target Species of Antibody: Human

Restrictions: For Research Use only

Handling

Format: Liquid

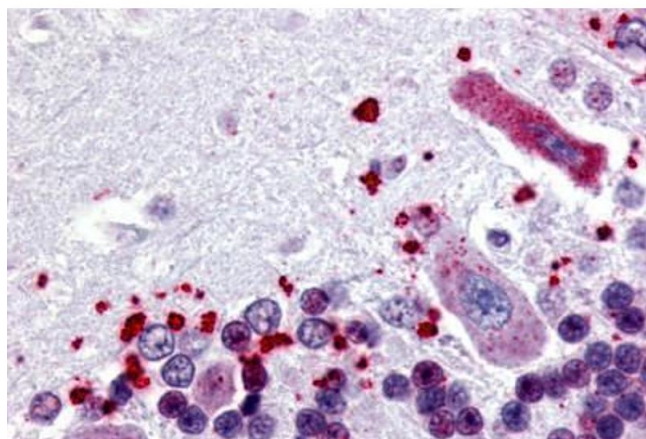
Concentration: Lot specific

Buffer: PBS, less than 0.1 % sodium azide.

Handling

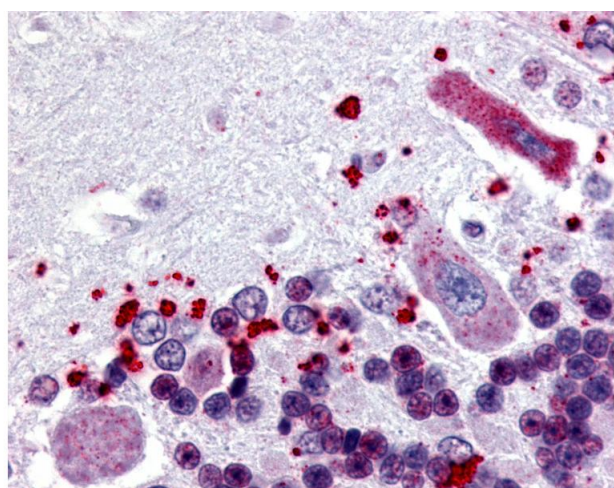
Preservative:	Sodium azide
Precaution of Use:	This product contains Sodium azide: a POISONOUS AND HAZARDOUS SUBSTANCE which should be handled by trained staff only.
Storage:	4 °C,-20 °C
Storage Comment:	Aliquot and store undiluted at -20°C or below for up to 1 year. Can be stored undiluted at 4°C for up to 1 month. Avoid freeze-thaw cycles.
Expiry Date:	12 months

Images



Immunohistochemistry (Paraffin-embedded Sections)

Image 1. Human Brain, Cerebellum (formalin-fixed, paraffin-embedded) stained with NPBWR1 antibody ABIN213360 at 20 ug/ml followed by biotinylated goat anti-rabbit IgG secondary antibody ABIN481713, alkaline phosphatase-streptavidin and chromogen.



Immunohistochemistry

Image 2. Anti-NPBWR1 antibody IHC of human brain, cerebellum. Immunohistochemistry of formalin-fixed, paraffin-embedded tissue after heat-induced antigen retrieval.