

Datasheet for ABIN213366

anti-G Protein-Coupled Receptor 133 antibody (C-Term)[Go to Product page](#)**2** Images

Overview

Quantity:	50 µg
Target:	G Protein-Coupled Receptor 133 (GPR133)
Binding Specificity:	C-Term
Reactivity:	Human
Host:	Rabbit
Clonality:	Polyclonal
Conjugate:	This G Protein-Coupled Receptor 133 antibody is un-conjugated
Application:	Immunohistochemistry (Paraffin-embedded Sections) (IHC (p)), Immunohistochemistry (IHC)

Product Details

Brand:	IHC-plus™
Immunogen:	Synthetic 16 amino acid peptide from C-terminal cytoplasmic domain of human GPR133. Percent identity with other species by BLAST analysis: Human (100%), Gorilla, Gibbon, Marmoset, Mouse, Hamster, Horse, Rabbit (94%), Monkey, Dog, Panda (88%), Elephant (81%). Type of Immunogen: Synthetic peptide
Specificity:	Human GPR133. BLAST analysis of the peptide immunogen showed no homology with other human proteins.
Predicted Reactivity:	Percent identity with other species by BLAST analysis: Human (100%) Gorilla, Gibbon, Marmoset, Mouse, Hamster, Horse, Rabbit (94%) Monkey, Dog, Panda (88%) Elephant (81%).
Purification:	Immunoaffinity purified

Target Details

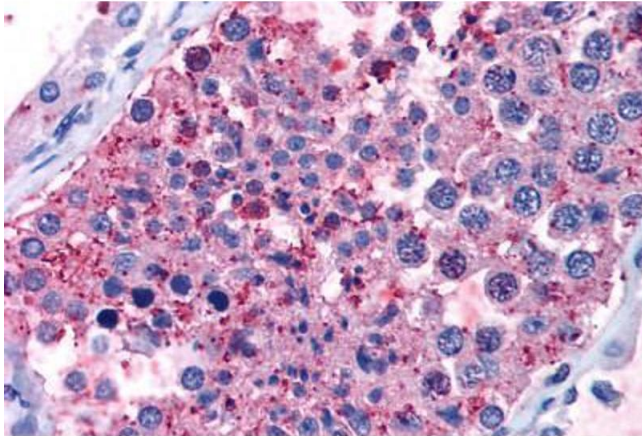
Target:	G Protein-Coupled Receptor 133 (GPR133)
Alternative Name:	ADGRD1 / GPR133 (GPR133 Products)
Background:	Name/Gene ID: ADGRD1 Subfamily: Orphan-U Family: GPCR Synonyms: ADGRD1, G protein-coupled receptor 133, GPR133, PGR25
Gene ID:	283383

Application Details

Application Notes:	Approved: IHC, IHC-P (20 µg/mL)
Comment:	Target Species of Antibody: Human
Restrictions:	For Research Use only

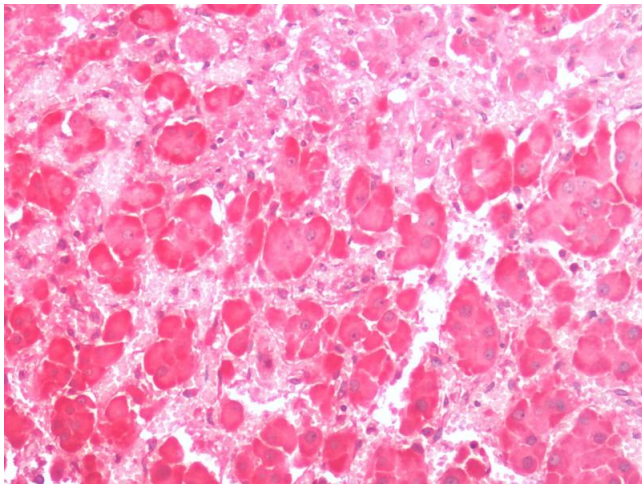
Handling

Format:	Liquid
Concentration:	Lot specific
Buffer:	PBS, less than 0.1 % sodium azide.
Preservative:	Sodium azide
Precaution of Use:	This product contains Sodium azide: a POISONOUS AND HAZARDOUS SUBSTANCE which should be handled by trained staff only.
Storage:	4 °C, -20 °C
Storage Comment:	Aliquot and store undiluted at -20°C or below for up to 1 year. Can be stored undiluted at 4°C for up to 1 month. Avoid freeze-thaw cycles.
Expiry Date:	12 months



Immunohistochemistry (Paraffin-embedded Sections)

Image 1. Human Testis (formalin-fixed, paraffin-embedded) stained with GPR133 antibody ABIN213366 at 4.8 ug/ml followed by biotinylated goat anti-rabbit IgG secondary antibody ABIN481713, alkaline phosphatase-streptavidin and chromogen.



Immunohistochemistry (Paraffin-embedded Sections)

Image 2. Human Adrenal: Formalin-Fixed, Paraffin-Embedded (FFPE)