

Datasheet for ABIN213369

anti-GPR81 antibody (Cytoplasmic Domain)**2** Images[Go to Product page](#)

Overview

Quantity:	50 µg
Target:	GPR81
Binding Specificity:	Cytoplasmic Domain
Reactivity:	Human, Monkey
Host:	Rabbit
Clonality:	Polyclonal
Conjugate:	This GPR81 antibody is un-conjugated
Application:	Immunohistochemistry (IHC), Immunohistochemistry (Paraffin-embedded Sections) (IHC (p))

Product Details

Brand:	IHC-plus™
Immunogen:	Synthetic 17 amino acid peptide from 3rd cytoplasmic domain of human GPR81. Percent identity with other species by BLAST analysis: Human, Gorilla, Monkey (100%), Bat (94%), Marmoset, Platypus (88%), Mouse, Hamster (82%). Type of Immunogen: Synthetic peptide
Specificity:	Human GPR81. BLAST analysis of the peptide immunogen showed no homology with other human proteins.
Predicted Reactivity:	Percent identity with other species by BLAST analysis: Human, Gorilla, Monkey (100%) Bat (94%) Marmoset, Platypus (88%) Mouse, Hamster (82%).
Purification:	Immunoaffinity purified

Target Details

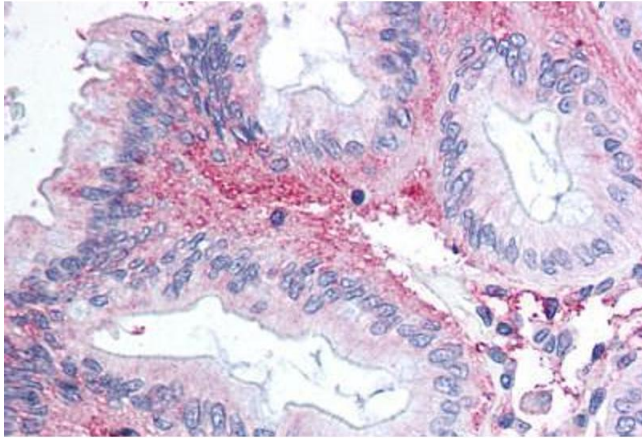
Target:	GPR81
Alternative Name:	FKSG80 / GPR81 (GPR81 Products)
Background:	Name/Gene ID: HCAR1 Subfamily: Chemokine Family: GPCR Synonyms: HCAR1, FKSG80, G protein-coupled receptor 81, G-protein coupled receptor 104, G protein-coupled receptor 104, G-protein coupled receptor 81, GPR81, GPR104, LACR1, HCA1, TA-GPCR, Lactate receptor 1
Gene ID:	27198
UniProt:	Q9BXC0

Application Details

Application Notes:	Approved: IHC, IHC-P (5 - 10 µg/mL)
Comment:	Target Species of Antibody: Human
Restrictions:	For Research Use only

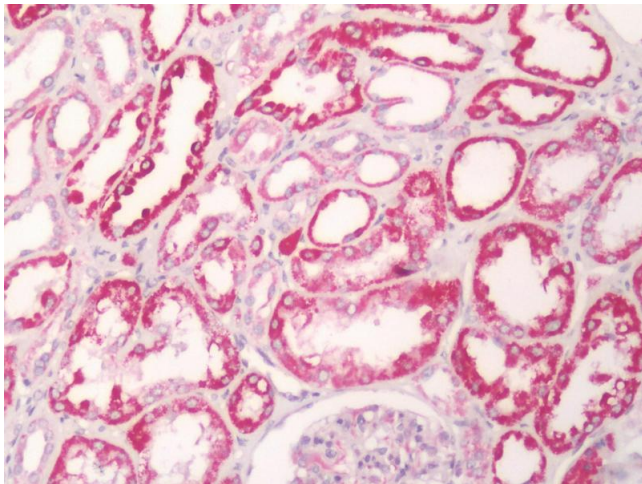
Handling

Format:	Liquid
Concentration:	Lot specific
Buffer:	PBS, less than 0.1 % sodium azide.
Preservative:	Sodium azide
Precaution of Use:	This product contains Sodium azide: a POISONOUS AND HAZARDOUS SUBSTANCE which should be handled by trained staff only.
Storage:	4 °C,-20 °C
Storage Comment:	Aliquot and store undiluted at -20°C or below for up to 1 year. Can be stored undiluted at 4°C for up to 1 month. Avoid freeze-thaw cycles.
Expiry Date:	12 months



Immunohistochemistry (Paraffin-embedded Sections)

Image 1. Human Colon, Epithelium (formalin-fixed, paraffin-embedded) stained with GPR81 antibody ABIN213369 at 11 ug/ml followed by biotinylated goat anti-rabbit IgG secondary antibody ABIN481713, alkaline phosphatase-streptavidin and chromogen.



Immunohistochemistry (Paraffin-embedded Sections)

Image 2. Human Kidney: Formalin-Fixed, Paraffin-Embedded (FFPE)