

Datasheet for ABIN213385

anti-NR5A2 + LRH1 antibody (Internal Region)**2** Images[Go to Product page](#)

Overview

Quantity:	50 µg
Target:	NR5A2 + LRH1 (NR5A2)
Binding Specificity:	Internal Region
Reactivity:	Human, Rat, Mouse, Dog, Horse, Zebrafish (Danio rerio), Monkey, Chicken, Hamster, Xenopus laevis
Host:	Rabbit
Clonality:	Polyclonal
Conjugate:	This NR5A2 + LRH1 antibody is un-conjugated
Application:	Immunohistochemistry (IHC), Immunohistochemistry (Paraffin-embedded Sections) (IHC (p))

Product Details

Brand:	IHC-plus™
Immunogen:	<p>Synthetic 16 amino acid peptide from internal region of human NR5A2. Percent identity with other species by BLAST analysis: Human, Gorilla, Gibbon, Monkey, Marmoset, Mouse, Rat, Dog, Hamster, Elephant, Panda, Horse, Opossum, Turkey, Chicken, Platypus, Xenopus, Trout, Zebrafish, Stickleback (100%), Sheep, Bovine, Bat, Pufferfish (94%), Chimpanzee (88%), Catfish (81%).</p> <p>Type of Immunogen: Synthetic peptide</p>
Specificity:	Human NR5A2. BLAST analysis of the peptide immunogen showed no homology with other human proteins.

Product Details

Predicted Reactivity: Percent identity with other species by BLAST analysis: Human, Gorilla, Gibbon, Monkey, Marmoset, Mouse, Rat, Dog, Hamster, Elephant, Panda, Horse, Opossum, Turkey, Chicken, Platypus, Xenopus, Trout, Zebrafish, Stickleback (100%) Sheep, Bovine, Bat, Pufferfish (94%) Chimpanzee (88%) Catfish (81%).

Purification: Immunoaffinity purified

Target Details

Target: NR5A2 + LRH1 (NR5A2)

Alternative Name: NR5A2 / LRH-1 ([NR5A2 Products](#))

Background: Name/Gene ID: NR5A2
Subfamily: NR5 Fushi tarazu-like
Family: NHR

Synonyms: NR5A2, B1F, B1F2, B1-binding factor, CPF, CYP7A promoter-binding factor, FTZ-F1beta, FTF, Liver receptor homolog 1, LRH1, LRH-1, HB1F, HB1F-2, Nuclear receptor phr-1, FTZ-F1, Liver receptor homolog-1, Nuclear receptor NR5A2, Receptor phr

Gene ID: 2494

Pathways: [Nuclear Receptor Transcription Pathway](#), [Steroid Hormone Mediated Signaling Pathway](#)

Application Details

Application Notes: Approved: IHC, IHC-P (10 - 20 µg/mL)

Usage: Immunohistochemistry: This antibody was validated for use in immunohistochemistry on a panel of 21 formalin-fixed, paraffin-embedded (FFPE) human tissues after heat induced antigen retrieval in pH 6.0 citrate buffer. After incubation with the primary antibody, slides were incubated with biotinylated secondary antibody, followed by alkaline phosphatase-streptavidin and chromogen. The stained slides were evaluated by a pathologist to confirm staining specificity. The optimal working concentration for this antibody was determined to be 2.5 - 5 µg/mL. Antibody does not work with tissues fixed in 4 % PFA.

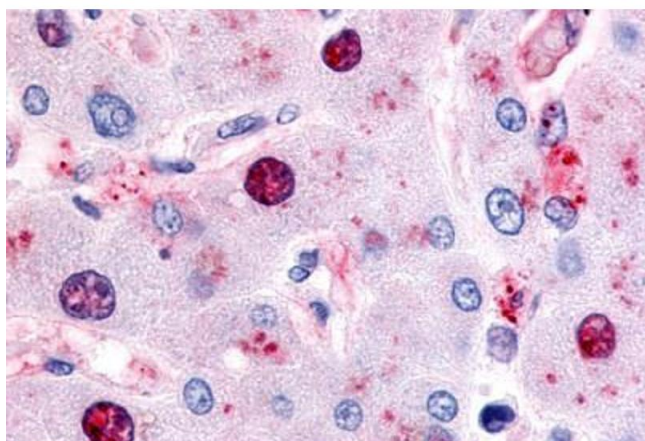
Comment: Target Species of Antibody: Human

Restrictions: For Research Use only

Handling

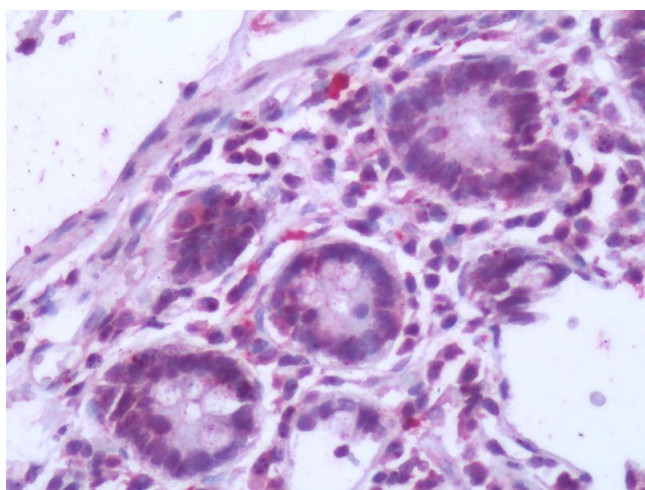
Format:	Liquid
Concentration:	Lot specific
Buffer:	PBS, less than 0.1 % sodium azide.
Preservative:	Sodium azide
Precaution of Use:	This product contains Sodium azide: a POISONOUS AND HAZARDOUS SUBSTANCE which should be handled by trained staff only.
Storage:	4 °C,-20 °C
Storage Comment:	Aliquot and store undiluted at -20°C or below for up to 1 year. Can be stored undiluted at 4°C for up to 1 month. Avoid freeze-thaw cycles.
Expiry Date:	12 months

Images



Immunohistochemistry (Paraffin-embedded Sections)

Image 1. Human Liver (formalin-fixed, paraffin-embedded) stained with NR5A2 antibody ABIN213385 at 8.6 ug/ml followed by biotinylated goat anti-rabbit IgG secondary antibody ABIN481713, alkaline phosphatase-streptavidin and chromogen.



Immunohistochemistry

Image 2. Human Small Intestine: Formalin-Fixed, Paraffin-Embedded (FFPE)