

Datasheet for ABIN213394

anti-Solute Carrier Family 5 (Sodium/inositol Cotransporter), Member 11 (SLC5A11) (Extracellular Domain) antibody[Go to Product page](#)**2** Images

Overview

Quantity:	50 µg
Target:	Solute Carrier Family 5 (Sodium/inositol Cotransporter), Member 11 (SLC5A11)
Binding Specificity:	Extracellular Domain
Reactivity:	Human, Monkey
Host:	Rabbit
Clonality:	Polyclonal
Conjugate:	Un-conjugated
Application:	Immunohistochemistry (IHC), Immunohistochemistry (Paraffin-embedded Sections) (IHC (p))

Product Details

Brand:	IHC-plus™
Immunogen:	Synthetic 17 amino acid peptide from extracellular domain of human SLC5A11. Percent identity with other species by BLAST analysis: Human, Gorilla, Gibbon, Monkey, Marmoset (100%), Rabbit, Horse, Pig (94%), Rat, Elephant (88%), Mouse, Dog, Bovine, Hamster, Opossum, Turkey, Chicken (82%). Type of Immunogen: Synthetic peptide
Specificity:	Human SLC5A11. BLAST analysis of the peptide immunogen showed no homology with other human proteins, except SLC5A2 (65 %), SLC5A9 (65 %).
Predicted Reactivity:	Percent identity with other species by BLAST analysis: Human, Gorilla, Gibbon, Monkey, Marmoset (100%) Rabbit, Horse, Pig (94%) Rat, Elephant (88%) Mouse, Dog, Bovine, Hamster,

Product Details

Opossum, Turkey, Chicken (82%).

Purification: Immunoaffinity purified

Target Details

Target: Solute Carrier Family 5 (Sodium/inositol Cotransporter), Member 11 (SLC5A11)

Alternative Name: SLC5A11 / SMIT2 ([SLC5A11 Products](#))

Background: Name/Gene ID: SLC5A11
Subfamily: Solute:sodium symporter
Family: Transporter

Synonyms: SLC5A11, Homolog of rabbit KST1, KST1, SLGTX, SMIT2, RKST1, SGLT6

Gene ID: 115584

Application Details

Application Notes: Approved: IHC, IHC-P (10 µg/mL)

Usage: Immunohistochemistry: This antibody was validated for use in immunohistochemistry on a panel of 21 formalin-fixed, paraffin-embedded (FFPE) human tissues after heat induced antigen retrieval in pH 6.0 citrate buffer. After incubation with the primary antibody, slides were incubated with biotinylated secondary antibody, followed by alkaline phosphatase-streptavidin and chromogen. The stained slides were evaluated by a pathologist to confirm staining specificity. The optimal working concentration for this antibody was determined to be 10 µg/mL.

Comment: Target Species of Antibody: Human

Restrictions: For Research Use only

Handling

Format: Liquid

Concentration: Lot specific

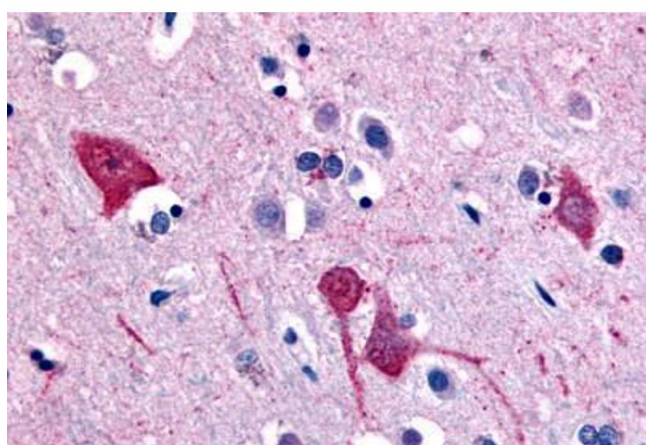
Buffer: PBS, less than 0.1 % sodium azide.

Preservative: Sodium azide

Handling

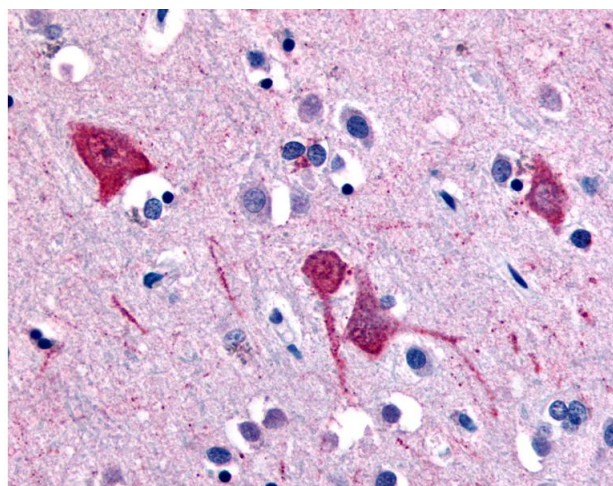
Precaution of Use:	This product contains Sodium azide: a POISONOUS AND HAZARDOUS SUBSTANCE which should be handled by trained staff only.
Storage:	4 °C, -20 °C
Storage Comment:	Aliquot and store undiluted at -20°C or below for up to 1 year. Can be stored undiluted at 4°C for up to 1 month. Avoid freeze-thaw cycles.
Expiry Date:	12 months

Images



Immunohistochemistry (Paraffin-embedded Sections)

Image 1. Human Brain, Cortex (formalin-fixed, paraffin-embedded) stained with SLC5A11 antibody ABIN213394 at 10 ug/ml followed by biotinylated goat anti-rabbit IgG secondary antibody ABIN481713, alkaline phosphatase-streptavidin and chromogen.



Immunohistochemistry

Image 2. Anti-SLC5A11 antibody IHC of human brain, cortex. Immunohistochemistry of formalin-fixed, paraffin-embedded tissue after heat-induced antigen retrieval.