



[Go to Product page](#)

Datasheet for ABIN213403
anti-DKK1 antibody (N-Term)

2 Images

Overview

Quantity:	50 µg
Target:	DKK1
Binding Specificity:	N-Term
Reactivity:	Human, Horse, Pig, Monkey
Host:	Rabbit
Clonality:	Polyclonal
Conjugate:	This DKK1 antibody is un-conjugated
Application:	Immunohistochemistry (IHC), Immunohistochemistry (Paraffin-embedded Sections) (IHC (p))

Product Details

Brand:	IHC-plus™
Immunogen:	Synthetic 16 amino acid peptide from N-terminus of human DKK1. Percent identity with other species by BLAST analysis: Human, Gorilla, Monkey, Marmoset, Horse, Pig (100%), Gibbon, Mouse, Rat, Bat, Elephant (94%), Bovine, Hamster (88%), Panda, Rabbit (81%). Type of Immunogen: Synthetic peptide
Specificity:	Human DKK1. BLAST analysis of the peptide immunogen showed no homology with other human proteins.
Predicted Reactivity:	Percent identity with other species by BLAST analysis: Human, Gorilla, Monkey, Marmoset, Horse, Pig (100%) Gibbon, Mouse, Rat, Bat, Elephant (94%) Bovine, Hamster (88%) Panda, Rabbit (81%).

Product Details

Purification: Immunoaffinity purified

Target Details

Target: DKK1

Alternative Name: DKK1 ([DKK1 Products](#))

Background: Name/Gene ID: DKK1

Synonyms: DKK1, Dickkopf-1 like, DKK-1, Dickkopf-1, Dickkopf-related protein 1, Dickkopf related protein-1, HDkk-1, Hdkk1, Dickkopf-like protein 1, SK

Gene ID: 22943

Pathways: [WNT Signaling](#), [Regulation of Muscle Cell Differentiation](#), [Positive Regulation of fat Cell Differentiation](#)

Application Details

Application Notes: Approved: IHC, IHC-P (20 µg/mL)

Usage: Immunohistochemistry: This antibody was validated for use in immunohistochemistry on a panel of 21 formalin-fixed, paraffin-embedded (FFPE) human tissues after heat induced antigen retrieval in pH 6.0 citrate buffer. After incubation with the primary antibody, slides were incubated with biotinylated secondary antibody, followed by alkaline phosphatase-streptavidin and chromogen. The stained slides were evaluated by a pathologist to confirm staining specificity. The optimal working concentration for this antibody was determined to be 20 µg/mL.

Comment: Target Species of Antibody: Human

Restrictions: For Research Use only

Handling

Format: Liquid

Concentration: Lot specific

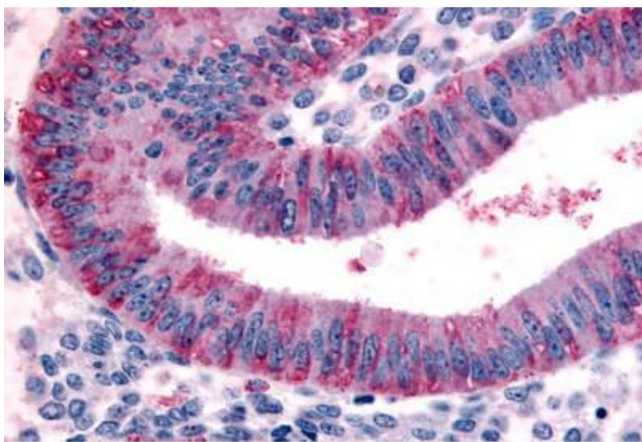
Buffer: PBS, less than 0.1 % sodium azide.

Preservative: Sodium azide

Handling

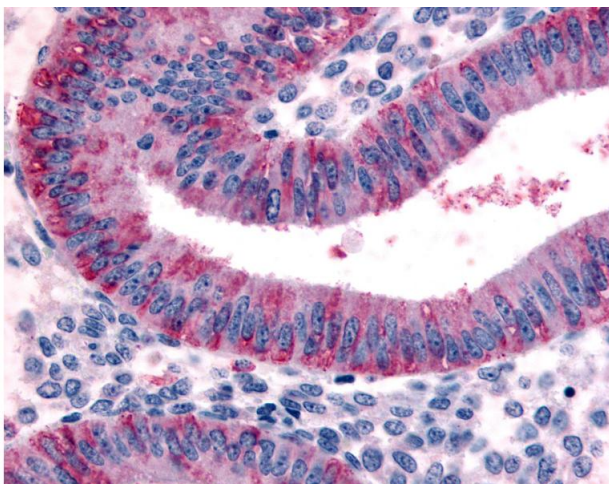
Precaution of Use:	This product contains Sodium azide: a POISONOUS AND HAZARDOUS SUBSTANCE which should be handled by trained staff only.
Storage:	4 °C,-20 °C
Storage Comment:	Aliquot and store undiluted at -20°C or below for up to 1 year. Can be stored undiluted at 4°C for up to 1 month. Avoid freeze-thaw cycles.
Expiry Date:	12 months

Images



Immunohistochemistry (Paraffin-embedded Sections)

Image 1. Human Uterus, Endometrium (formalin-fixed, paraffin-embedded) stained with DKK1 antibody ABIN213403 at 20 ug/ml followed by biotinylated goat anti-rabbit IgG secondary antibody ABIN481713, alkaline phosphatase-streptavidin and chromogen.



Immunohistochemistry

Image 2. Anti-DKK1 antibody IHC of human uterus, endometrium. Immunohistochemistry of formalin-fixed, paraffin-embedded tissue after heat-induced antigen retrieval.