

Datasheet for ABIN213416
anti-NANP antibody (Internal Region)



[Go to Product page](#)

2 Images

Overview

Quantity:	50 µg
Target:	NANP
Binding Specificity:	Internal Region
Reactivity:	Human, Rat, Mouse, Rabbit, Dog, Hamster
Host:	Rabbit
Clonality:	Polyclonal
Conjugate:	This NANP antibody is un-conjugated
Application:	Immunohistochemistry (IHC), Immunohistochemistry (Paraffin-embedded Sections) (IHC (p))

Product Details

Brand:	IHC-plus™
Immunogen:	Synthetic 16 amino acid peptide from internal region of human NANP. Percent identity with other species by BLAST analysis: Human, Gorilla, Gibbon, Monkey, Mouse, Rat, Dog, Hamster, Panda, Rabbit (100%), Marmoset, Bovine, Elephant, Pig, Opossum, Turkey, Chicken, Platypus (94%), Bat (88%), Lizard (81%). Type of Immunogen: Synthetic peptide
Specificity:	Human NANP. BLAST analysis of the peptide immunogen showed no homology with other human proteins.
Predicted Reactivity:	Percent identity with other species by BLAST analysis: Human, Gorilla, Gibbon, Monkey, Mouse, Rat, Dog, Hamster, Panda, Rabbit (100%) Marmoset, Bovine, Elephant, Pig, Opossum, Turkey,

Product Details

Chicken, Platypus (94%) Bat (88%) Lizard (81%).

Purification: Immunoaffinity purified

Target Details

Target: NANP

Alternative Name: NANP ([NANP Products](#))

Background: Name/Gene ID: NANP
Family: Phosphatase

Synonyms: NANP, C20orf147, DJ694B14.3, Neu5Ac-9-Pase, HDHD4

Gene ID: 140838

Application Details

Application Notes: Approved: IHC, IHC-P (10 - 15 µg/mL)

Usage: Immunohistochemistry: This antibody was validated for use in immunohistochemistry on a panel of 21 formalin-fixed, paraffin-embedded (FFPE) human tissues after heat induced antigen retrieval in pH 6.0 citrate buffer. After incubation with the primary antibody, slides were incubated with biotinylated secondary antibody, followed by alkaline phosphatase-streptavidin and chromogen. The stained slides were evaluated by a pathologist to confirm staining specificity. The optimal working concentration for this antibody was determined to be 10-15 µg/mL.

Comment: Target Species of Antibody: Human

Restrictions: For Research Use only

Handling

Format: Liquid

Concentration: Lot specific

Buffer: PBS, less than 0.1 % sodium azide.

Preservative: Sodium azide

Precaution of Use: This product contains Sodium azide: a POISONOUS AND HAZARDOUS SUBSTANCE which

Handling

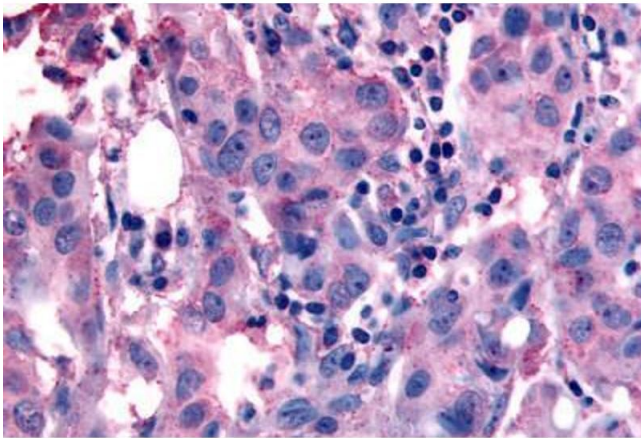
should be handled by trained staff only.

Storage: 4 °C,-20 °C

Storage Comment: Aliquot and store undiluted at -20°C or below for up to 1 year. Can be stored undiluted at 4°C for up to 1 month. Avoid freeze-thaw cycles.

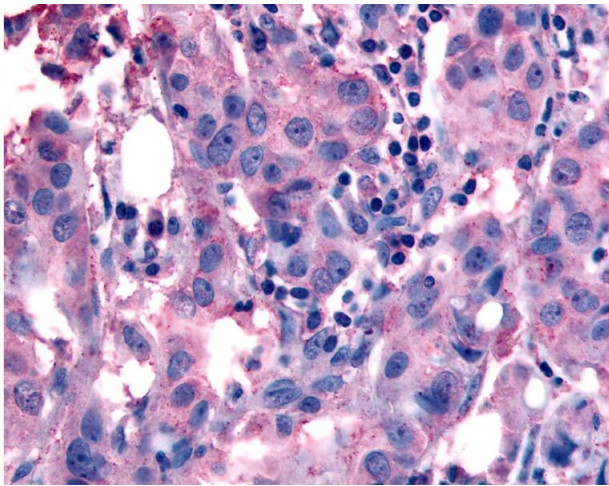
Expiry Date: 12 months

Images



Immunohistochemistry (Paraffin-embedded Sections)

Image 1. Human Neoplastic Cells (formalin-fixed, paraffin-embedded) stained with NANP antibody ABIN213416 at 10-15 ug/ml followed by biotinylated goat anti-rabbit IgG secondary antibody ABIN481713, alkaline phosphatase-streptavidin and chromogen.



Immunohistochemistry

Image 2. Anti-NANP antibody IHC of human Breast, Carcinoma. Immunohistochemistry of formalin-fixed, paraffin-embedded tissue after heat-induced antigen retrieval.