

Datasheet for ABIN213427  
**anti-GPR153 antibody (C-Term)**

## 2 Images

[Go to Product page](#)

## Overview

Quantity:	50 µg
Target:	GPR153
Binding Specificity:	C-Term
Reactivity:	Human, Monkey
Host:	Rabbit
Clonality:	Polyclonal
Conjugate:	This GPR153 antibody is un-conjugated
Application:	ELISA, Immunohistochemistry (IHC), Immunohistochemistry (Paraffin-embedded Sections) (IHC (p))

## Product Details

Brand:	IHC-plus™
Immunogen:	Synthetic 16 amino acid peptide from C-terminal cytoplasmic domain of human GPR153. Percent identity with other species by BLAST analysis: Human, Monkey (100%), Rat (94%), Marmoset, Mouse, Bovine, Hamster, Elephant (88%), Bat, Dog, Pig (81%).  Type of Immunogen: Synthetic peptide
Specificity:	Human GPR153. BLAST analysis of the peptide immunogen showed no homology with other human proteins, except PCDHGA2 (56 % ), PCDHGA4 (50 %).
Predicted Reactivity:	Percent identity with other species by BLAST analysis: Human, Monkey (100%) Rat (94%) Marmoset, Mouse, Bovine, Hamster, Elephant (88%) Bat, Dog, Pig (81%).

## Product Details

Purification: Immunoaffinity purified

## Target Details

Target: GPR153

Alternative Name: PGR1 / GPR153 ([GPR153 Products](#))

Background: Name/Gene ID: GPR153  
Subfamily: Orphan-U  
Family: GPCR  
  
Synonyms: GPR153, PGR1, G protein-coupled receptor 153

Gene ID: 387509

## Application Details

Application Notes: Approved: ELISA, IHC, IHC-P (34 µg/mL)

Usage: Immunohistochemistry: This antibody was validated for use in immunohistochemistry on a panel of 21 formalin-fixed, paraffin-embedded (FFPE) human tissues after heat induced antigen retrieval in pH 6.0 citrate buffer. After incubation with the primary antibody, slides were incubated with biotinylated secondary antibody, followed by alkaline phosphatase-streptavidin and chromogen. The stained slides were evaluated by a pathologist to confirm staining specificity. The optimal working concentration for this antibody was determined to be 17 µg/mL.

Comment: Target Species of Antibody: Human

Restrictions: For Research Use only

## Handling

Format: Liquid

Concentration: Lot specific

Buffer: PBS, less than 0.1 % sodium azide.

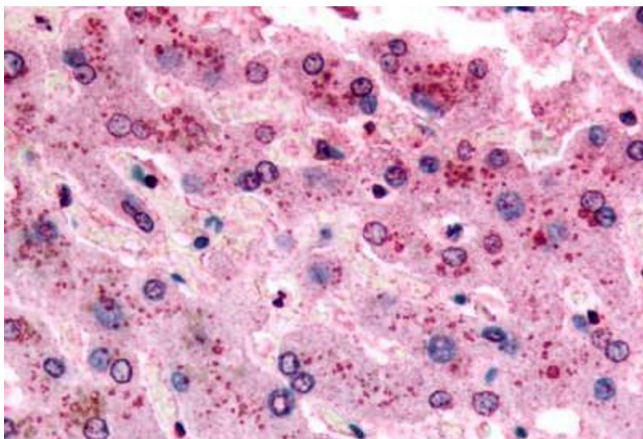
Preservative: Sodium azide

Precaution of Use: This product contains Sodium azide: a POISONOUS AND HAZARDOUS SUBSTANCE which

Handling

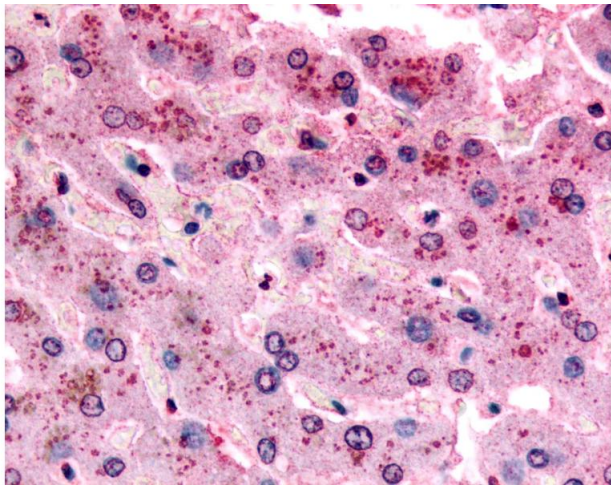
	should be handled by trained staff only.
Storage:	4 °C,-20 °C
Storage Comment:	Aliquot and store undiluted at -20°C or below for up to 1 year. Can be stored undiluted at 4°C for up to 1 month. Avoid freeze-thaw cycles.
Expiry Date:	12 months

Images



Immunohistochemistry (Paraffin-embedded Sections)

**Image 1.** Human Liver (formalin-fixed, paraffin-embedded) stained with GPR153 antibody ABIN213427 at 17 ug/ml followed by biotinylated goat anti-rabbit IgG secondary antibody ABIN481713, alkaline phosphatase-streptavidin and chromogen.



Immunohistochemistry

**Image 2.** Anti-GPR153 antibody IHC of human liver. Immunohistochemistry of formalin-fixed, paraffin-embedded tissue after heat-induced antigen retrieval.